



Airports Development

Executive Management

Program Status Report

January 31, 2010



Table of Contents

Project Status	_____	3
Schedule	_____	67
Financial	_____	76
OCIP	_____	98
MWBE/DBE	_____	101

Element Overview

Purpose

This report is a tool to provide status of the Capital Projects for the Airports Development Group. The report presents status per project followed by the Master Program Schedule, a Financial section with Budget, Cash Flow and Change Orders, and an OCIP and MWBE/DBE section.

Airside Element

The Airside Element consists of multiple projects necessary for accommodating the movement of large aircraft between the north and south runways; reconfiguring traffic movement to accommodate the Tom Bradley International Terminal (TBIT) expansion and modernization program; and provide airfield improvements as required by Airfield Operations, the Federal Aviation Authority and other Federal and State regulatory bodies.

Bradley West Element

The Bradley West Element provides for certain improvements identified in the approved LAX Master Plan, specifically related to development of new aircraft gates at the Tom Bradley International Terminal. The new gates will support the airport's ability to effectively and efficiently accommodate new large aircraft, such as the Airbus A380, Boeing 747 and Boeing 747-8. In addition, the project calls for substantial improvements related to the concourses and central core area of the Tom Bradley International Terminal, including:

- construction of new north and south concourses at the terminal, west of the existing concourses, which would be removed;
- construction of eight aircraft gates and associated loading bridges and apron areas, along the west side of the new terminal concourses;
- relocation and consolidation of existing aircraft gates along the east side of the Tom Bradley Terminal;
- renovation and enlargement of the existing U.S. Customs and Border Protection areas within the central core of the terminal; and
- construction of the secure passenger corridors between Terminals 3 and 4, and the Bradley Terminal.

Element Overview - Continued

Central Utility Plant (CUP) Replacement Element

The CUP Replacement Element includes replacing the existing CUP, constructed in 1961, and the co-generation facility, brought into service in 1985, which are considered obsolete and inefficient relative to present-day technology, the distribution network between the CUP and the terminals, and various mechanical/electrical infrastructure improvements within the terminals.

Utilities and Infrastructure Element

These capital improvement projects are critical utility and infrastructure elements that support Terminal and Airport operations within the Central Terminal Area (CTA). Current construction projects include the In-Line Baggage Screening System program consisting of the construction of fully integrated Transportation Security Administration (TSA) screening equipment in Terminal 3 and removal of lobby machines, plus, the IT Fiber Loop Backbone project which will provide new connectivity between all Terminals and the Telecommunication Building.

Landside Element

The Landside Element undertakes capital projects designed to provide for the efficient and effective movement of people through the airport; and to provide convenient parking for individuals using the airport. Landside projects are typically related to parking lots, public transportation, train stations, tank farms, warehouse and cargo areas and access roads and perimeter fencing.

Residential / Soundproofing Element

LAWA has implemented a voluntary Airport Residential Soundproofing Program (RSP) for aircraft noise impacted areas in the City of Los Angeles. This program is for impacted homes adjacent to the Los Angeles International Airport (LAX) and other jurisdictions. Along with residential soundproofing LAWA is implementing a school soundproofing agreement to aircraft noise impacted areas in the City of Los Angeles.

Element Overview - Continued

Terminals Element

Most of LAX's Terminals have been serving their purpose without major renovations or modernization efforts over the years. As needs change, the Terminal spaces and structures need repairs, upgrades, modernization, and standardization to satisfy these changing demands. From modernizing elevators and escalators with standardized devices to updating fire/life safety systems, the Terminals Element is focused on implementing these necessary improvements.

TBIT Renovation Element

The Tom Bradley International Terminal (TBIT) was designed in 1982 and constructed for the opening of the 1984 Olympics that were held in Los Angeles. In the intervening years, other than minor improvements and concessions additions, the terminal had not been remodeled or modernized and did not provide comparable standards, amenities, and aesthetics realized at other international and national airports around the world. The aesthetics and finishes at TBIT were based on 1980s design. The lighting in most areas was not up to current standards, the paging system was inadequate, and some areas did not meet current building code requirements including the Americans with Disabilities Act (ADA). Contact gates at TBIT were inadequate to accommodate the "New Large Aircrafts", e.g. Airbus A380. Lastly, due to the events following September 11, 2001, the Transportation Security Administration (TSA) mandated requirements for in-line 100% checked baggage screening of the outbound baggage system at TBIT. The proposed project addresses these deficiencies and new security baggage screening requirements through a comprehensive modernization and upgrade of TBIT.

AIRSIDE ELEMENT - Construction Support Facilities (M209A)

Project Description

The project includes the construction of a new aircraft parking ramp/block, new emergency exits for American Airlines Maintenance Hangar, airfield security fencing, building modifications, and other miscellaneous construction activities as may be required.

Planning and Programming Status

Project Definition is complete.

Design Progress

Design is 100% complete.

Construction Progress

First construction contract awarded to Griffith Construction on April 21, 2009.

Notice to Proceed issued June 29, 2009.

Construction is 32% complete.

Issues

AIRSIDE ELEMENT - Associated Projects (M000A)

Project Description

The project includes the relocation and/or removal of facilities including the LAWA Records Retention Warehouse, Information Technology (IT) Communications Hub and demolition of the American Airlines Ground Support Equipment (GSE) Maintenance Shop to enable the Crossfield Taxiway Project.

Planning and Programming Status

Project Definition is complete.

Design Progress

Design is 100% complete.

Construction Progress

Construction is complete.

Issues

AIRSIDE ELEMENT - Crossfield Taxiway Project (M101A)

Project Description

The project entails the construction of a 3,437-foot-long by 100-foot-wide taxiway that connects Taxiway 'B' on the south and Taxiway 'E' on the north. To facilitate this construction, there will be removal of existing deteriorated concrete pavement and the removal of asphalt pavement replaced with Portland Cement Concrete (PCC) and asphalt concrete pavement. This project also constructs a new parallel service road and a replacement apron for Remain Overnight (RON) and the following facilities:

Realignment of World Way West and two bridges over the road; one for aircraft crossing as a part of taxiway C13 and the other for vehicular traffic;

Taxiway centerline electrical, lighting and signage;

Pavement markings, including centerline, edge striping and edge reflectors; and

Installation of redesigned drainage and modifications to existing utilities.

Planning and Programming Status

Project Definition is complete.

Design Progress

Design is 100% complete.

Construction Progress

Construction contract awarded to R & L Brosamer Inc. on March 23, 2009.

Notice to Proceed issued May 11, 2009.

Construction is 43% complete.

Issues

Design revisions to accommodate stormwater filter vaults and increased storm drain pipe sizes impacted portions of a fuel line profile. A change order is being prepared to revise the fuel line profile. The change order will be funded from existing project contingency.

AIRSIDE ELEMENT - LAX Aircraft Rescue and Fire Fighting Facility (M107A)

Project Description

The new Aircraft Rescue and Fire Fighting Facility (ARFF) is proposed to be constructed as a replacement for the existing Fire Station No. 80. This new facility will be located on World Way West just west of Remain Over Night (RON) aircraft aprons situated relative to the mid-points of the outmost runways (Runway 6L/24R on the north and Runway 7R/25L on the south). The proposed ARFF would provide approximately 27,500 square feet of administrative office area and station living quarters within a 2-story structure, six bays for emergency vehicles along with a service bay, storage area for various emergency response equipments, and briefing and training rooms.

Planning and Programming Status

Project Definition is complete.

Design Progress

Design is 100% complete.

Construction Progress

Construction contract awarded to Tobo Construction on June 10, 2009.

Administrative Notice to Proceed issued July 10, 2009.

Construction is 14% complete.

Issues

AIRSIDE ELEMENT - Bradley West - Aprons (M205A)

Project Description

The Bradley West Aprons project contains an East and West component. The Bradley West Aprons project consists of approximately 34,000 square yards of pavement and associated drainage covering the aprons on the west side of the north and south Concourses as well as the apron west of the Core. This apron construction includes all grading, utilities, airfield signage and lighting; construction of LADWP power and communication ductbanks; and the LAWA power and communication ductbanks.

The Bradley East Aprons project entails construction of approximately 121,000 square yards of pavement and associated drainage from the edge of the new Concourses to the edge of Taxiways C10/D10. It includes all grading, drainage, utilities, airfield signage and lighting; construction of LADWP power and communication ductbanks; and the LAWA power and communication ductbanks.

Planning and Programming Status

Project Definition is complete.

Design Progress

West Aprons awarded design is 100% complete.

East Aprons design is 15% complete.

Construction Progress

West Aprons -

The Bradley West Gates and Core contracts awarded to Walsh-Austin.

Construction anticipated to begin January 2010.

East Aprons -

No construction contracts awarded.

Issues

AIRSIDE ELEMENT - Taxilane 'S' (M204A)

Project Description

This project undertakes the relocation of certain ancillary and support facilities; and constructs a 3,487-foot long Taxilane to connect Taxiway 'B' on the south and Taxiway 'E' on the north. Taxilane 'S' will be constructed as part of a 400 foot wide Portland Cement Concrete (PCC) paved strip which will be the first part of the future Dual Taxilane / Taxiway System between the proposed Midfield Satellite Concourse and the Tom Bradley International Terminal. The centerline is located 528 feet west of the existing Taxiway 'Q' centerline. A 169-foot-Object Free Area (OFA) will be provided on the east side of the Taxilane 'S' centerline in accordance with the FAA approved Airport Layout Plan (ALP). This construction also includes the relocation of fuel lines and other utilities, all grading, airfield signage and lighting, construction of LADWP power and communication ductbanks; and the LAWA power and communication ductbanks.

The project also includes the construction of approximately 60,000 square yards of pavement and associated drainage covering the aprons on the west side of the north and south Concourses as well as the apron west of the Bradley Core. This apron construction includes all grading, utilities, airfield signage and lighting; construction of LADWP power and ductbanks; and the LAWA power and communications ductbanks.

Planning and Programming Status

Project Definition is complete.

Design Progress

Design is 100% complete.

Construction Progress

Construction contract awarded to Flatiron West, Inc. on December 7, 2009.
Administrative NTP issued on December 18, 2009.

Issues

AIRSIDE ELEMENT - Taxilane 'T' Associated Work (M207A)

Project Description

This project undertakes the relocation of certain ancillary and support facilities to enable the Taxilane 'T' Project. Several existing airfield facilities require relocation and/or removal, including the existing Sky Chef Building 209, TWA High Bay Hangar (partial) and associated utilities, American Airlines Low Bay Hangar and H2O Deluge System on the south side of hangar.

Planning and Programming Status

Project Definition is complete.

Design Progress

No design is awarded.

Construction Progress

No construction contracts awarded.

Issues

AIRSIDE ELEMENT - Taxilane 'T' (M306A)

Project Description

The project consists of the construction of a 3,166-foot long Taxilane to connect Taxiway 'C' on the south and Taxiway 'D' on the north. Taxilane 'T' will be constructed as part of a 300 ft. wide Portland Cement Concrete (PCC) paved strip which will be the second part of the future Dual Taxilane / Taxiway System replacing existing Taxiways 'Q' and 'S', west of reconfigured Tom Bradley International Terminal (TBIT). The Taxilane 'T' centerline is located 818 feet west of the existing Taxiway 'Q' centerline. A 169-foot-Object Free Area (OFA) will be provided on the west side of the Taxilane 'T' centerline in accordance with the FAA approved Airport Layout Plan (ALP). This construction also includes the Taxilane "T" Service Road, the relocation of fuel lines and other utilities, all grading, airfield signage and lighting, construction of LADWP power ductbanks; and the LAWA power and communication ductbanks.

Planning and Programming Status

Project Definition is complete.

Design Progress

No design is awarded.

Construction Progress

No construction contracts awarded.

Issues

AIRSIDE ELEMENT - Demolition of Existing Concourses (M210A)

Project Description

Upon completion of the new Bradley West Concourses, this project includes demolition of the existing concourses with the exception of Gate 123, demolition of any existing utilities and restores the site to an appropriate state for Apron construction.

Planning and Programming Status

Project Definition is complete.

Design Progress

Design is 15% complete.

Construction Progress

Construction contract awarded to Walsh-Austin Joint Venture on November 4, 2009.

Issues

AIRSIDE ELEMENT - West Area Maintenance Pad & Infrastructure (G001A)

Project Description

This potential project includes the construction of 51 acres of new Remain Over Night (RON) aircraft aprons, an aircraft maintenance hangar, associated office space, a 120,806 square foot Ground Run-up Enclosure (GRE), and a 63,977 square foot employee parking all located west of Taxiway 'AA' and south of World Way West.

Planning and Programming Status

Currently in Project Definition.

Design Progress

No design is awarded.

Construction Progress

No construction contracts awarded.

Issues

AIRSIDE ELEMENT - American Airlines Settlement (M309A)

Project Description

This effort funds a Memorandum of Agreement (MOA) between LAWA and American Airlines (AA) related to the Right of Entry and Construction Commencement Agreement between LAWA and AA. AA will make necessary improvements on a substituted premises.

Planning and Programming Status

Project Definition is complete.

Design Progress

Design contract awarded to Hatch Mott MacDonald.
Design is 100% complete.

Construction Progress

American Airlines will be handling all improvements.

Issues

AIRSIDE ELEMENT - Southside Airfield Improvement Program - Airfield Intersection Improvements - Phase 2 (A001A)

Project Description

This project consists of improving various airfield intersections and modifying service road locations to provide safe taxiing routes for current large aircraft and future New Large Aircraft (NLA). This second phase includes widening of 5 intersections throughout the north and south airfield complex at LAX, specifically in the vicinity of Taxiways E and C and Runways 24L and 25R. The project will include intersection pavement and shoulder reconstruction and relocation of all affected taxiway lighting and signage, demolition of existing vaults 2N and 2S, and construction of a new electrical vault.

Planning and Programming Status

Project Definition is complete.

Design Progress

Design is 100% complete.

Construction Progress

Construction contract awarded to R & L Brosamer, Inc. on June 2, 2008.

Notice to Proceed issued July 1, 2008.

Construction is 98% complete.

Issues

AIRSIDE ELEMENT - Southside Airfield Improvement Program - Runway 25L & Center Taxiway (A004A)

Project Description

This project provides for the relocation and reconstruction of Runway 25L-7R, and the subsequent construction of a center taxiway between Runways 25L-7R and 25R-7L. The project includes removal of existing deteriorated concrete runway and taxiway pavement, construction of Portland Cement Concrete (PCC) pavement and asphalt concrete pavement, new airfield signage and lighting systems, airfield pavement markings, storm drains, structural improvements to the approach slabs over the Sepulveda Tunnel and other related runway/taxiway intersections improvements.

Planning and Programming Status

Project Definition is complete.

Design Progress

Design is 100% complete.

Construction Progress

Construction is complete and project is in close-out.

Issues

AIRSIDE ELEMENT - Propeller Aircraft Aviation Center - Site Preparation (VNY) (A005A)

Project Description

This project consists of demolition and site restoration of two separate areas owned by the Van Nuys airport. This project provides opportunities for developers to develop the site as a permanent Propeller Aircraft Aviation Center.

Planning and Programming Status

Project Definition is complete.

Design Progress

Design is 100% complete.

Construction Progress

Construction is complete and project is in close-out.

Issues

AIRSIDE ELEMENT - GSE Quick Charging Stations Implementation (Pilot Program) (A003A)

Project Description

This pilot project consists of installing Ground Service Equipment (GSE) "Quick" (1-hr) Electrification Chargers on all existing 400 Hz systems in all passenger terminals. At Terminals 1 through 7, this project will install quick charging corral stations, one on each side of the terminal. Terminal 8 requires only one (1) quick charging corral. Each corral can handle 16-vehicle charging positions. This is a requirement of the LAX Mitigation, Monitoring and Reporting Program (MMRP).

Planning and Programming Status

Currently in Project Definition.

Design Progress

No design contracts awarded.

Construction Progress

No construction contracts awarded.

Issues

AIRSIDE ELEMENT - Runway Safety Area Improvements - (Planning) (A008A)

Project Description

These projects consist of improving the Runway Safety Area (RSA) of Runways 7L-25R, 6L-24R, and 6R-24L at Los Angeles International Airport (LAX) to conform with Federal Aviation Administration (FAA) advisory circular (AC) 150/5300-13. The current Planning phase identifies and studies different approaches to mitigating the existing RSA deficiencies related to each runway, as identified by the FAA.

Planning and Programming Status

Currently in Project Definition.

Design Progress

No design contract awarded.

Construction Progress

No construction contract awarded.

Issues

AIRSIDE ELEMENT - Airfield Safety Improvements (A006A)

Project Description

The overall goal of the Los Angeles World Airports (LAWA) airfield safety improvement program is to continuously and proactively enhance airfield safety while maintaining efficient aircraft movement.

The Interim Runway Safety Improvement Program (IRSIP) project provides three new high-speed exit taxiways between the North Airfield Runways, and modifies existing connector taxiways, with the goal to decrease the likelihood and severity of potential runway incursions.

Planning and Programming Status

An on-call Aviation Services contract was awarded to URS Corporation on December 7, 2009.

Task No. 1 authorizing project definition, design and an initial environmental assessment was issued on December 22, 2009.

Design Progress

No design contracts awarded.

Construction Progress

No construction contracts awarded.

Issues

AIRSIDE ELEMENT - Runway Status Light System (A009A)

Project Description

Construction of infrastructure improvements necessary for the installation of a Runway Status Light (RWSL) system at LAX. The project includes the installation of light cans, conduit, wiring, electrical circuit modifications, pull boxes, vault modifications and miscellaneous electrical work in selected runways and taxiways. Per an agreement with FAA, LAWA will reimburse the FAA up to \$3.85 M for all additional costs associated with the implementation of the RWSL system. FAA's portion of the work includes overall program management, system engineering and software development, review of design packages, procurement and installation of needed airfield lighting equipment, system testing and commissioning.

Planning and Programming Status

Project Definition is complete.

Design Progress

Design is 100% complete.

Construction Progress

Construction contract awarded June 2, 2008 to Helix Electric Inc.
Construction is complete and project is in close-out.

Issues

AIRSIDE ELEMENT - Security Airfield Access Posts Upgrade (A007A)

Project Description

This project provides for additional vehicular crash-rated road barriers at both the entrance and exit lanes of security access posts 1, 3, 4, and 5. In addition, the existing automated 6-foot high chain-link fence sliding gate will be replaced by new automated 8-foot high chain-link fence sliding gate. It also includes the relocation of card readers as needed.

Planning and Programming Status

Project Definition is complete.

Design Progress

Design is 100% complete.

Construction Progress

Construction is complete and project is in close-out.

Issues

BRADLEY WEST ELEMENT - Bradley West Gates (M201A)

Project Description

The project consists of the construction of new double-loaded North and South Concourses at Tom Bradley International Terminal (TBIT). The configuration of the concourses will be based upon the approved aircraft parking layout consisting of nine (9) A380 gates and five (5) Airplane Design Group (ADG) V gates and three (3) narrow-body gates. In addition, the work will consist of constructing approximately 540,000 sq ft of space for passenger services (concessions, toilets etc.), building systems (mech/elect/plumbing), building maintenance, airline operations, retail/food service concessions, concessions storage areas, back of house secured circulation space and airline lounges. The project will also include Building Systems (pedestrian transportation systems, HVAC, electrical and plumbing, drainage, lighting), Telephone System, Life Safety Systems (PA and smoke/fire detection, alarm and sprinkler) and Terminal Systems such as Electronic Visual Information Display System (EVIDS), baggage conveyance, building management systems, access control, intrusion alarm, etc.

Planning and Programming Status

Project Definition is complete.

Design Progress

Design is 90% complete.

Construction Progress

Pre-Construction contract awarded to Walsh-Austin Joint Venture on June 10, 2009.
Notice to Proceed for the Pre-Construction services was issued on June 11, 2009.
Construction contract awarded to Walsh-Austin Joint Venture on November 4, 2009.
Construction started January 2010.

Issues

BRADLEY WEST ELEMENT - Bradley West Core Improvements (M203A)

Project Description

This project will provide improvements to the Federal Inspection Service (FIS) facilities in Tom Bradley International Terminal (TBIT) and allow for the development of new 560,000 sf improved departure level (post security) passenger amenities, including new restrooms, concessions, airline lounges, and administrative offices within TBIT's existing north and south concourses; renovates, improves and enlarges the space used by the FIS and the Customs and Border Patrol (CBP); constructs secure/sterile passenger corridors between TBIT and Terminals 3 and 4; and renovates and improves existing facilities throughout TBIT including reconfiguration of the security screening checkpoint.

Planning and Programming Status

Project Definition is complete.

Design Progress

Design is 75% complete.

Construction Progress

Pre-Construction and construction contract awarded to Walsh-Austin Joint Venture on November 4, 2009.
Pre-Construction started January 2010 and construction anticipated to begin May 2010.

Issues

BRADLEY WEST ELEMENT - Traffic Mitigations (M203B)

Project Description

The Bradley West Project Environmental Impact Report (EIR) identifies significant traffic impacts at several intersections, which, under state law, require mitigation. Such mitigation may require physical improvements to the impacted intersections. The EIR identifies significant impacts at 23 intersections; however, feasible improvements identified to date address eight (8) of those intersections.

Planning and Programming Status

Project Definition is complete.

Design Progress

Design is 80% complete.

Construction Progress

No construction contracts awarded.

Issues

BRADLEY WEST ELEMENT - Art In Public Places (M308A)

Project Description

The program, part of the City of Los Angeles commitment to the community, commissions local artists to produce original artwork for public places. The City passed a law in 1989 allocating one percent of all capital improvement costs to commission art in public places. The Department of Cultural Affairs administers this program through its Public Art Division, aiming to utilize this one percent to contribute enduring, contemporary art experiences to public facilities in the City.

Planning and Programming Status

Not applicable.

Design Progress

No design contract awarded.

Construction Progress

No construction contract awarded.

Issues

CUP REPLACEMENT ELEMENT - Central Utility Plant (C001A)

Project Description

The project provides a replacement Central Utility Plant (CUP) to supply cooling, hot-water and chilled water to the Central Terminal Area (CTA); the required chillers, pumps generators, boilers and piping to produce and distribute the hot and cold water; and gas turbine driven generators with heat recovery steam generators (co-generation). The project also includes:

Construction of an underground thermal energy storage (TES) tank.

Temporary Power and Associated Relocations Project (TPAR) includes construction of a new substation to feed power to the existing CUP and installation of replacement switchgear to allow demolition of the CUP Maintenance Shop building. This work also includes installing new underground utilities to replace the existing utilities with the footprint of the new CUP.

The utility distribution system to be provided as part of this project includes interconnecting with existing piping as well as providing completely new services to new terminals and replacement or bypassing of some existing piping.

Demolition of the existing CUP, cooling towers, an electrical substation and existing maintenance buildings located at the footprint of the new CUP.

Facility Management and Control System (FMCS) located in the control room and related control equipment to be furnished for installation in the mechanical rooms of the terminals.

Planning and Programming Status

Project Definition is complete.

Design Progress

Design is complete for solicitation of a design build contractor.

Construction Progress

No construction contracts awarded.

Five proposals were received and evaluated. The short-listed Design-Builders were notified on January 25, 2010.

Issues

CUP REPLACEMENT ELEMENT - CTA - Utility Distribution - Phase 2, 3, 4 (C004A)

Project Description

The primary intent of the proposed project is to complete the design of the Utilities Distribution Project Phases 2, 3 and 4. This design will provide approximately 4,500 linear feet of new hot and chilled water distribution piping from the new CUP Replacement Project, east through the Central Terminal Area (CTA) to Terminals 1, 2, 5, 6, 7, and 8 as well as the Theme Building and the East Admin Building. The design will also include upgrades to the fire water and potable water system within the CTA as well as a reclaimed water distribution system.

Planning and Programming Status

Currently in Project Definition.
A scoping proposal is being developed.

Design Progress

No design contracts awarded.

Construction Progress

No construction contracts awarded.

Issues

UTILITIES & INFRASTRUCTURE ELEMENT - Security Program In-Line Baggage Screening Systems (T3) North (U001A)

Project Description

This project provides for in-line baggage screening system in LAX Terminal 3 pursuant to the requirements of TSA. This project's original budget also included construction of an in-line baggage screening system at Terminals 1 and 2. This project includes replacement of the existing airline baggage handling spaces; construction of new baggage screening rooms; replacement of the outbound baggage conveyor systems; and installation/integration of TSA-provided Explosion Detection System (EDS) machines. Also included are Explosion Trace Detection (ETD) work stations, On-screen Resolution (OSR) Control Room and CCTV systems.

Planning and Programming Status

Project Definition is complete.

Design Progress

Design is 100% complete.

Construction Progress

Construction contract awarded to Swinerton Builders May 16, 2007.

Construction is 99.5% complete.

Issues

UTILITIES & INFRASTRUCTURE ELEMENT - IT Fiber Loop Backbone (U002A)

Project Description

This project provided for a 216 strand fiber optic information technology loop throughout the Central Terminal Area (CTA) to serve all passenger terminals and to connect to the LAX Telecommunication Building.

Planning and Programming Status

Project Definition is complete.

Design Progress

Design is 100% complete.

Construction Progress

Construction contract awarded to Axxis Network & Telecommunications October 8, 2008.
Construction is complete and project is in close-out.

Issues

UTILITIES & INFRASTRUCTURE ELEMENT - IT Infrastructure Construction (U003A)

Project Description

The IT Infrastructure Construction project consists of a number of sub-projects which impact the underlying LAWA IT passive infrastructure including: telecom rooms, conduit, and cable and fiber. The IT Infrastructure Construction project consists of the following: 1) an inventory of all existing fiber assets and the implementation of a permanent cable management system for future management of fiber assets; 2) a multiyear, multi phase plan which outlines LAX infrastructure needs for the next 10-15 years; 3) a design for constructing additional telecom rooms in areas where terminal renovation is not planned; 4) construction of additional telecom rooms, installation of conduit and fiber to areas of the airport where these resources are needed.

Planning and Programming Status

Currently in Project Definition.

Design Progress

No design contract awarded.

Construction Progress

No construction contract awarded.

Issues

UTILITIES & INFRASTRUCTURE ELEMENT - Wired & Wireless (U004A)

Project Description

This project provides scalability and layering to the communication network that currently does not exist, for improvements in security supporting the post September 11th security requirements.

Planning and Programming Status

Project Definition is complete.

Design Progress

System Design/Hardware by En Pointe Technologies.

Construction Progress

Radio Frequencies/Equipment contract awarded to Motorola August 2, 2004.

Communication equipment and supplies contracts awarded July 1, 2006 to:

Graybar Electric Company

Metro Video Systems

One Source Distributors

Issues

UTILITIES & INFRASTRUCTURE ELEMENT - Voice Over Internet Protocol (U006A)

Project Description

This project updates the existing outdated telephone infrastructure through the purchase of desktop phone units and undertakes limited system-level upgrades.

Planning and Programming Status

Project Definition is complete.

Design Progress

Design is 100% complete.

Construction Progress

Equipment and Maintenance contract awarded to AT&T Datacom.

Issues

UTILITIES & INFRASTRUCTURE ELEMENT - Enhanced Access Control Monitoring System (ACAMS) (U007A)

Project Description

The Access Control Alarm Monitoring System (ACAMS) is made up of the hardware and software that control secured doors at LAX. This project will replace the existing 12-year-old system, integrate it with the badge system, and expand the integration of the video network (VNET) surveillance capability to monitor all restricted areas including passenger terminals. The project will provide for planning, design and implementation of ACAMS readers, distribution hubs, network integration equipment and command monitoring for access control and the Video Network. Badge system application and processing will be integrated as part of the new ACAMS.

Planning and Programming Status

Currently in Project Definition.

Design Progress

No design contract awarded.

Construction Progress

No construction contract awarded.

Issues



UTILITIES & INFRASTRUCTURE ELEMENT - Security Program - In-Line Baggage Screening System (ONT) (U008A)

Project Description

This project provides for in-line baggage screening systems in Terminals 2 and 4 pursuant to the requirements of the TSA. This project includes replacement of the existing airline baggage handling spaces; construction of new baggage screening rooms; replacement of the outbound baggage conveyor systems; and installation/integration of TSA-provided Explosion Detection System (EDS) machines. Also included are Explosion Trace Detection (ETD) workstations, On-screen Resolution (OSR) Control Rooms and CCTV systems.

Planning and Programming Status

Project Definition is complete.

Design Progress

Design is 100% complete.

Construction Progress

Construction is complete and project is in close-out.

Issues

UTILITIES & INFRASTRUCTURE ELEMENT - Airport Response Coordination Center (ARCC) (U009A)

Project Description

This project will provide a centralized response coordination center on the 4th floor of the existing Badging Building located at 7333 World Way West at Los Angeles International Airport (LAX). The project will improve efficiency and communication for day to day operations and response to incidents by collocating various shared operational functionalities into one consolidated location. The new Airport Response Coordination Center will co-locate Airfield Operations, Terminal Operations, Construction and Maintenance, non-emergency Airport Police functions, and traffic management staff into a joint use facility. This new office environment, will utilize information technology for audio, video, CCTV, voice, network, Cable TV connections, PCs, and associated video wall and peripherals to improve situational awareness and communication among various Divisions and staff at LAX.

Planning and Programming Status

Project Definition is complete.

Design Progress

Design is 50% complete.

Construction Progress

No construction contract awarded.

Issues

UTILITIES & INFRASTRUCTURE ELEMENT - Sewer Line Replacement (T1,T6) (U010A)

Project Description

This project will provide for the replacement of approximately 500 linear feet of sewer in Terminal 1 and Terminal 6.

Planning and Programming Status

Currently in Project Definition.

Design Progress

No design contract awarded.

Construction Progress

No construction contract awarded.

Issues

UTILITIES & INFRASTRUCTURE ELEMENT - Electrical Switchboard & Panelboard Replacements (T2, 3, 5, 6, 7,8) (U011A)

Project Description

This project consists of replacing old and outdated equipment and switchgear in the terminals to comply with the Department of Building and Safety directive. Specifically, this project replaces existing 1960's switchgear, replaces panel boards and distribution boards to code compliance, replaces cloth-type cabling, and upgrades the 1960's Emergency Generator System, where applicable. This project will not increase the electrical capacity within the terminals; but will comply with the Department of Building and Safety directive.

Planning and Programming Status

Currently in Project Definition.

Design Progress

No design contract awarded.

Construction Progress

No construction contract awarded.

Issues

UTILITIES & INFRASTRUCTURE ELEMENT - Terminal Air Handling Units (AHU) Upgrades (U012A)

Project Description

The proposed scope of work under this upgrade includes: replacement of all the air handling units built before 2001; replace all two-deck multi-zone systems with three deck multi-zone systems; replace all constant volume double duct systems with two-fan, variable volume double duct systems; replace all adjustable vane/variable air volume systems with variable systems with fix vanes and variable frequency drive motors; provide air economizers, fault detection and diagnostic (FDD) system; and commission the units.

Planning and Programming Status

Currently in Project Definition.

Design Progress

No design contract is awarded.

Construction Progress

No constructions contract is awarded.

Issues

UTILITIES & INFRASTRUCTURE ELEMENT - CCTV System Enhancement and Expansion (U013A)

Project Description

The CCTV project consists of replacing the existing out-dated and end-of-life analog system with a modern digital CCTV system that meets the requirements of a continually changing security environment. It includes the following: a digital network, 1,600 cameras, head-end equipment to control cameras centrally, fiber optics/conduits, hard-wired wide area network, wireless network, system integration application for CCTV system users, planning and design services, extensive asbestos abatement, and construction management. This project will greatly expand and enhance the existing CCTV system by providing cameras in all public terminal areas including ticketing lobbies, baggage claim areas, and hold-rooms. The cameras will be connected to a new, centralized monitoring facility. The project will create the computer storage area network and retrieval systems necessary to operate the equipment. This will entail the installation of approximately 200 new cameras in each of the terminal buildings including Tom Bradley International Terminal for a total of 1,600 cameras.

Planning and Programming Status

Currently in Project Definition.

Design Progress

No design contracts awarded.

Construction Progress

No construction contracts awarded.

Issues



LANDSIDE ELEMENT - Demolition of Facility SW Corner of Arbor Vitae and La Cienega (L001A)

Project Description

This project includes abatement and demolition of a one-story commercial building, two metal storage sheds, asphalt and concrete pavement, masonry wall and other miscellaneous items at a one-acre site at specific parcels on West Arbor Vitae Street. After demolition, activities include placement of compacted fill, geo-fabric, and a layer of crushed rock/gravel.

Planning and Programming Status

Project Definition is complete.

Design Progress

Design is 100% complete.

Construction Progress

Construction contract awarded to Pena Grading & Demolition on September 21, 2009.

Notice to proceed issued October 26, 2009.

Construction is 90% complete.

Issues

LANDSIDE ELEMENT - Air Freight 1 - Roof Renovation (L002A)

Project Description

This project will provide for the renovation of roof and roof top parking of Air Freight No.1 at LAX and provide a long term solution to the drainage problem on the roof of the building.

Planning and Programming Status

Project Definition is complete.

Design Progress

Design is 100% complete.

Construction Progress

Construction is complete and project is in close-out.

Issues

LANDSIDE ELEMENT - AOA Perimeter Fence (World Way West) Phase 3 (L003A)

Project Description

This project will enhance approximately 2.2 miles of fence from Taxiway AA to Coast Guard Road of LAX and will be constructed in the same manner as Phases 1 and 2. This project also provides security lighting and electrical duct banks along portions of World Way West from Taxiway AA to Coast Guard Road.

Planning and Programming Status

Project Definition is complete.

Design Progress

Design is 100% complete.

Construction Progress

Construction contract awarded to Griffith Company December 8, 2008.

Notice to Proceed issued January 22, 2009.

Construction is 58% complete.

Issues

LANDSIDE ELEMENT - I-105 Ramp Improvements (Caltrans) (L010A)

Project Description

This project releases funds not to exceed \$2M to the State of California Dept of Transportation (Caltrans) for the widening from two lanes to three lanes the westbound I-105 (Glenn Anderson) Freeway off-ramps to northbound Sepulveda Blvd leading to LAX.

Planning and Programming Status

Project Definition is complete.

Design Progress

Design is 100% complete.

Construction Progress

Construction is complete and project is in close-out.

Issues

LANDSIDE ELEMENT - Theme Building Restoration (L005A)

Project Description

This project provides for the reconstruction of the upper and lower arches to restore the appearance and provide weather protection. The entire structure will be seismically retrofitted using FEMA 356/ASCE 41 as the design guideline to a Collapse Prevention level. This will be accomplished using a Tuned Mass Damper on top of the elevator core and conventional shotcrete at various locations in the basement and first floor.

Planning and Programming Status

Project Definition is complete.

Design Progress

Design is 100% complete.

Construction Progress

Construction contract awarded to Tower General Construction Group on July 7, 2008.

Notice to Proceed issued August 18, 2008.

Construction is 92% complete.

Issues

LANDSIDE ELEMENT - ConRAC Planning & Definition (L007A)

Project Description

This project analyzes the alternatives and recommends the best site for a Consolidated Rent-A-Car (ConRAC) facility at LAX. This is one of the Green-Light projects under the LAX Master Plan. Consolidating the rental car companies onto a single site frees the terminals of rental car counters and support offices, allowing the space to be used for other airport needs.

Planning and Programming Status

Consulting contract for planning and definition awarded to Ricondo and Associates April 21, 2008.

Design Progress

No design contract awarded.

Construction Progress

No construction contracts awarded.

Issues

LANDSIDE ELEMENT - Aircraft Ground Power Ramp Areas (Cargo, Maintenance) (L011A)

Project Description

This project includes a Central Plant System to provide 400 Hz electrical power to thirty-eight (38) Maintenance Hangar Ramp Parking positions and thirty-seven (37) Cargo Operations Parking areas. Installation of the power systems enhances aircraft operations by reducing the Ground Power Units (GPUs) and Auxiliary Power Units (APUs).

Installation of power systems to provide electrification would enhance aircraft operations for many reasons, including the reduction of Ground Power Units (GPUs) and Auxiliary Power Units (APUs). This electrification project also satisfies Community Benefit Agreement (CBA) requirements. This project assumes the Central Plant System, as described within the Airfield Operations study (April 2006) is selected.

Planning and Programming Status

Currently in Project Definition.

Design Progress

No design is awarded.

Construction Progress

No construction is awarded.

Issues

LANDSIDE ELEMENT - CTA Expansion Joint Repair (Roadway and Parking) (L008A)

Project Description

This project repairs aging expansion joints throughout the Central Terminal Area (CTA). An expansion joint is an assembly designed to safely absorb the heat-induced expansion and contraction of various construction materials. Over time, the concrete slabs will expand and contract due to the warming and cooling of our planet through the seasons; and if not regularly maintained, roadway slabs may become irregular causing a “vehicular launching;” or joints within parking structures may begin leaking onto lower levels. The primary objective of the project is to improve roadway safety.

Planning and Programming Status

Currently in Project Definition.

Design Progress

No design contract awarded.

Construction Progress

No construction contract awarded.

Issues

LANDSIDE ELEMENT - Seismic Retrofit of CTA Pedestrian and Vehicular Bridges (L004A)

Project Description

This project will make non-compliant bridges code compliant by upgrading existing seismic protection with current code compliant retrofits to make them more resistant to seismic activity, ground motion, or soil failure due to earthquakes.

Planning and Programming Status

Currently in Project Definition.

Design Progress

No design contract awarded.

Construction Progress

No construction contract awarded.

Issues

LANDSIDE ELEMENT - CTA Security Barriers - Phase 2 (L009A)

Project Description

This project consists of installing approximately 800 permanent bollards at all entrances and critical locations at the upper and lower levels of the Central Terminal Area (CTA) to mitigate potential vehicular threats.

Planning and Programming Status

Currently in Project Definition.

Design Progress

No design contract awarded.

Construction Progress

No construction contract awarded.

Issues

RESIDENTIAL/SOUNDPROOFING ELEMENT - Aircraft & Noise Monitoring & Management System (ANMMS)-LAX (S004A)

Project Description

LAWA installed a state of the art Aircraft and Noise Monitoring and Management System (ANMMS) in 1990. The monitors measure noise 24 hours a day, 365 days a year. ANMMS measures airport generated noise in the community, tracks and identifies aircraft within a certain radius of the airport, and is used to help LAWA produce maps showing the noise impact area, as required by the State of California. LAWA continually monitors its ANMMS to ensure the accuracy of noise data and related operations information, and to improve the access to and utilization of the various types of available data.

Planning and Programming Status

Project Definition is complete.

Design Progress

Design is 100% complete.

Construction Progress

Construction contract awarded to Lochard Corporation on October 4, 2004.

Issues

RESIDENTIAL/SOUNDPROOFING ELEMENT - Aircraft & Noise Monitoring & Management System (ANMMS)-ONT (S007A)

Project Description

LAWA installed a state of the art Aircraft and Noise Monitoring and Management System (ANMMS) in 1990. The system includes 14 noise monitors located within the communities surrounding the Ontario Airport. The monitors measure noise 24 hours a day, 365 days a year. ANMMS measures airport generated noise in the community, tracks and identifies aircraft within a 10-nautical mile (~11.5 statute mile) radius of the airport, and is used to help LAWA produce maps showing the noise impact area, as required by the State of California. LAWA continually monitors its ANMMS to ensure the accuracy of noise data and related operations information, and to improve the access to and utilization of the various types of available data.

Planning and Programming Status

Project Definition is complete.

Design Progress

Design is 100% complete.

Construction Progress

Construction is complete and the project is in close-out.

Issues



RESIDENTIAL/SOUNDPROOFING ELEMENT - Noise Mitigation - City of Ontario (S005A)

Project Description

The program is implemented by the City of Ontario who will work to reduce, prevent and eliminate incompatible land uses in adjacent off-airport noise impacted boundaries.

Planning and Programming Status

Not applicable.

Design Progress

LAWA Grants to the city of Ontario for project execution.

Construction Progress

LAWA Grants to the city of Ontario for project execution.

Issues

RESIDENTIAL/SOUNDPROOFING ELEMENT - Noise Mitigation/LAX School Soundproofing Agreements - Part 1 (S001A)

Project Description

Los Angeles World Airports (LAWA), in connection with the local communities and Council offices, is implementing a school soundproofing agreement to aircraft noise impacted areas in the City of Los Angeles. The funding will be used to install acoustic modifications to lessen the effects of aircraft noise in impacted schools adjacent to the Los Angeles International Airport (LAX). This agreement includes the conditions, commitments, obligations, enforcement, etc., of both LAWA and the various schools as agreed to within the Community Benefits Agreement (CBA).

Planning and Programming Status

Not applicable.

Design Progress

No design contract is awarded.

Construction Progress

No construction contracts have been awarded at LAX to date.

No construction contracts have been awarded at Van Nuys to date.

Issues

RESIDENTIAL/SOUNDPROOFING ELEMENT - Noise Mitigation/Soundproofing (City of LA) (S002A)

Project Description

This project will provide soundproofing of approximately 9,400 eligible dwelling units making them land use compatible.

Planning and Programming Status

Not applicable.

Design Progress

Acoustic Design in progress by Corlett, Skaer & Devoto Architects at LAX.

Acoustic Design in progress by Wyle Labs at Van Nuys.

Construction Progress

Various Construction Contracts ongoing.

This component of the Noise Mitigation / Soundproofing Program is 70% complete.

Issues

RESIDENTIAL/SOUNDPROOFING ELEMENT - Noise Mitigation/Soundproofing (Other Jurisdictions) (S003A)

Project Description

This project provides funding for FAA/LAWA approved residential sound proofing programs in impacted areas within the cities of Inglewood, El Segundo and the unincorporated areas of Los Angeles County.

Planning and Programming Status

Not applicable.

Design Progress

LAWA Grants to the cities of Inglewood, El Segundo and the unincorporated areas of Los Angeles County for project execution.

Construction Progress

LAWA Grants to the cities of Inglewood, El Segundo and the unincorporated areas of Los Angeles County for project execution.

Issues

RESIDENTIAL/SOUNDPROOFING ELEMENT - Noise Mitigation / Voluntary Residential Acquisition & Relocation Program (Manchester SQ & Belford) (S006A)

Project Description

This project provides funding for property acquisition of eligible single and multi-family structures at LAX; provides relocation assistance to homeowners, investor owners, tenants and home-based businesses purchased by the airport; provides property management services to maintain tenant relations and landscaping services until the unit is vacated; provides housing stock to non-profit, "move" organizations; and demolishes housing stock when deemed unsuitable for beneficial occupancy.

Planning and Programming Status

Not applicable.

Design Progress

Community relations by Breunig & Associates.

Construction Progress

Property Management, Appraisal, Procurement & Installation, Property Acquisition, and demolition provided by various contracts.

Issues

TERMINAL ELEMENT - Elevators and Escalators Replacement (T001A)

Project Description

This project will upgrade / replace all aging elevators, escalators and moving walkways at LAX, which have exceeded their useful life expectancy. These units will be upgraded/replaced in staggered Priority Groups.

Planning and Programming Status

Project Definition is complete.

Design Progress

Priority I Procurement - Design is 100% complete.
Priority I Site Mods - Design is 100% complete.
Priority II-IV Procurement - Design is 100% complete.
Priority II-IV Site Mods - Design is 35% complete.
Priority II-IV GC MRLE Elevators - Design is 19% complete.

Construction Progress

Priority I Procurement - Contract awarded to Kone, Inc. on May 18, 2009 - Procurement is 30% complete.
Priority I Site Mods - Construction contract awarded to W.E. O'Neil Construction Company on August 17, 2009 - Construction is 18% complete.
Priority II-IV Procurement - Not yet approved by the Board.
Priority II-IV Site Mods - No construction contracts awarded.
Priority II-IV GC MRLE Elevators - No construction contracts awarded.

Issues

TERMINAL ELEMENT - Passenger Boarding Bridges Replacement (T1, T3, T6, Remotes) (T004A)

Project Description

This project will provide for the delivery and installation of ten new passenger Boarding Bridges (PBBs): one in Terminal 1 (Gate 11); six in Terminal 3 (Gates 30, 31B, 32, 33A, 37 A/B & 39); one in terminal 6 (Gate 68A); and two in Remote Gates 208 and 209. This project does include an allowance for civil work that may be needed to prepare for the bridge, such as minor electrical power reconfiguration, footing or foundation modifications, and /or terminal or gate modifications.

Planning and Programming Status

Currently in Project Definition.

Design Progress

No design contract awarded.

Construction Progress

No construction contract awarded.

Issues

TERMINAL ELEMENT - Preconditioned Air Unit Installation (T1, T3, T6) (T005A)

Project Description

This project consists of the installation of zone preconditioned air (PCA) systems on Terminals 1, 3, and 6. Zone systems include air-cooled chillers and pumps located on the apron adjacent to terminals. This is a requirement of the Community Benefits Agreement (CBA).

Planning and Programming Status

Currently in Project Definition.

Design Progress

No design contract awarded.

Construction Progress

No construction contract awarded.

Issues

TERMINAL ELEMENT - Baggage Claim Devices Replacement (T3) (T002A)

Project Description

This project includes demolition of the existing baggage carousels and installs new baggage carousels at Terminal 3. It includes 596 linear feet of straight conveyance, 10-power turns and 1,440 linear feet of stainless steel trim for the claim areas.

Planning and Programming Status

Currently in Project Definition.

Design Progress

No design contract is awarded.

Construction Progress

No construction contract is awarded.

Issues

TERMINAL ELEMENT - Passenger Boarding Bridge at Gate 64 (T003A)

Project Description

The Project consists of the demolition, removal and disposal of the existing Passenger Boarding Bridge (PBB) at Terminal 6 Gate 64, and the fabrication, delivery, installation, testing, training and commissioning of the new PBB. The new PBB will include a bridge mounted potable water unit, 400-Hertz ground power unit, and preconditioned air (PCA) unit. The electrical work consists of installation of new wiring, conduit, junction boxes and cabinets, molded circuit breakers in existing distribution boards, and basic connections to the PBB in both interior and exterior locations.

Planning and Programming Status

Project Definition is complete.

Design Progress

Design is 100% complete.

Construction Progress

Construction is complete and project is in close-out.

Issues

TBIT RENOVATION ELEMENT - TBIT Interior Improvements and Baggage Screening Facilities (B001A)

Project Description

This project will renovate the interior public spaces (including the departure lobby; departure concourses; arrival concourses; bus hold room; meeter-greeter area; in-transit lounge; in-bound and outbound baggage system; upgrade the building's paging system, all IT Systems and upgrade the existing elevators, escalators, and moving walks) and construct the North New Large Aircraft Gates. The outbound baggage system will be pursuant to the requirements of the TSA and will include new "matrix" buildings to house the security screening equipment and TSA personnel.

Planning and Programming Status

Project Definition is complete.

Design Progress

Design is 100% complete.

Construction Progress

Construction contract awarded to Clark/McCarthy Joint Venture September 8, 2006.

Construction contract is 95% complete.

Issues

TBIT RENOVATION ELEMENT - Passenger Boarding Bridges (PBB) Replacements & Extensions (B002A)

Project Description

This project will deliver and install 26 new passenger boarding bridges (PBBs) at the Tom Bradley International Terminal, West Remote Boarding Facilities, Terminal 3 and 6 extension PBBs at Ontario Terminals 2 and 4.

Planning and Programming Status

Project Definition is complete.

Design Progress

Design is 100% complete.

Construction Progress

This project is in close-out.

Issues

User's Guide - Schedule

The information provided herein is designed to furnish users of the Airport Development Group (ADG) Program Construction Schedule Report with greater knowledge and a better understanding of the composition of the various components of the budget report.

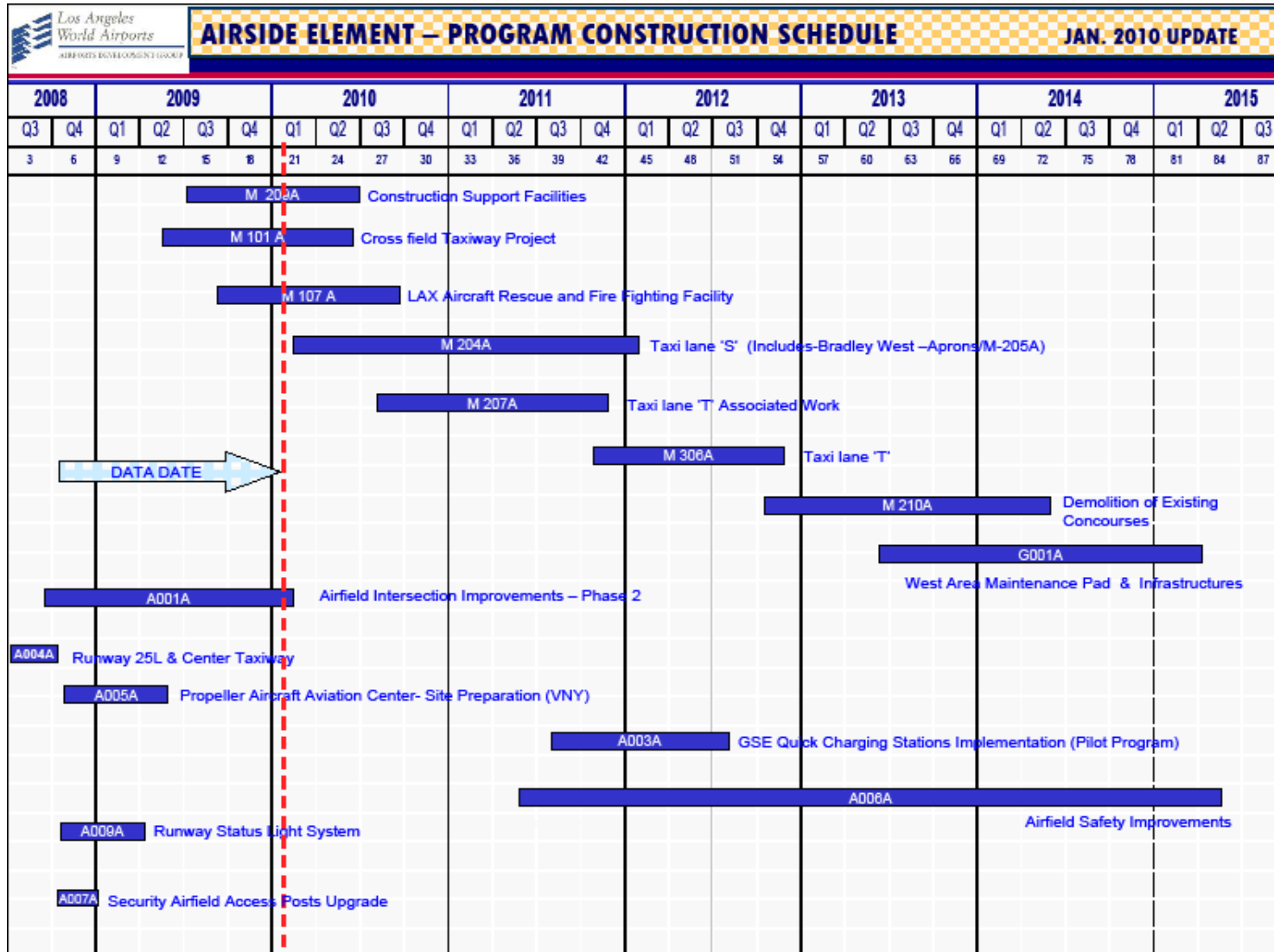
Data Date - Is a vertical line showing the current date of the report. Dates to the left side of the data date are known. Dates to the right side of the data date are projected.

Project Schedule Bar - Is the blue bar which represents the construction phase for each project; with the exception of the Residential / Soundproofing projects which contains planning, design and construction phases.

Project Number - Is a unique identifier for each project that enables the reader to easily correlate scope, schedule and budget.

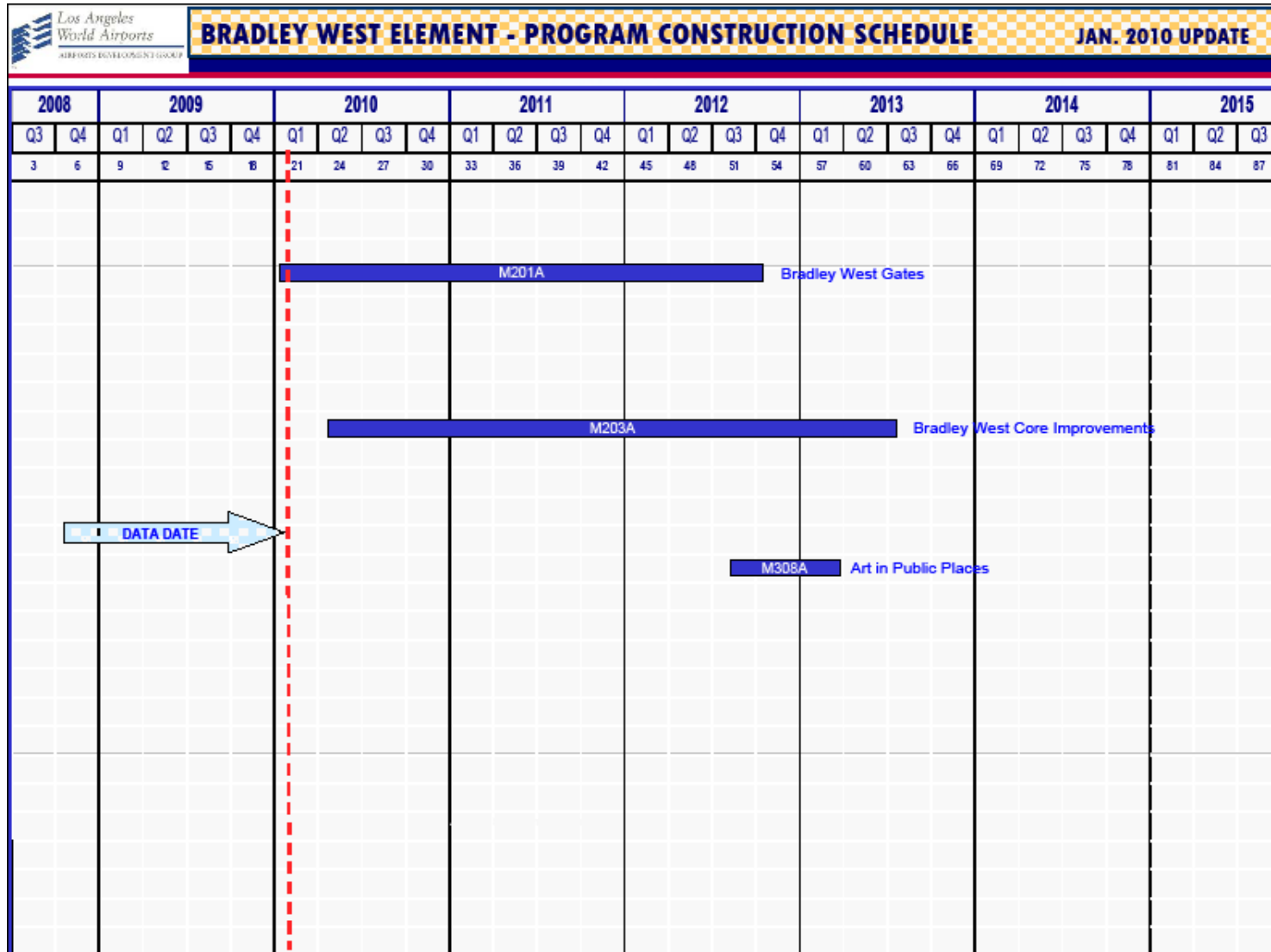


PROGRAM MASTER SCHEDULE - Continued





PROGRAM MASTER SCHEDULE - Continued



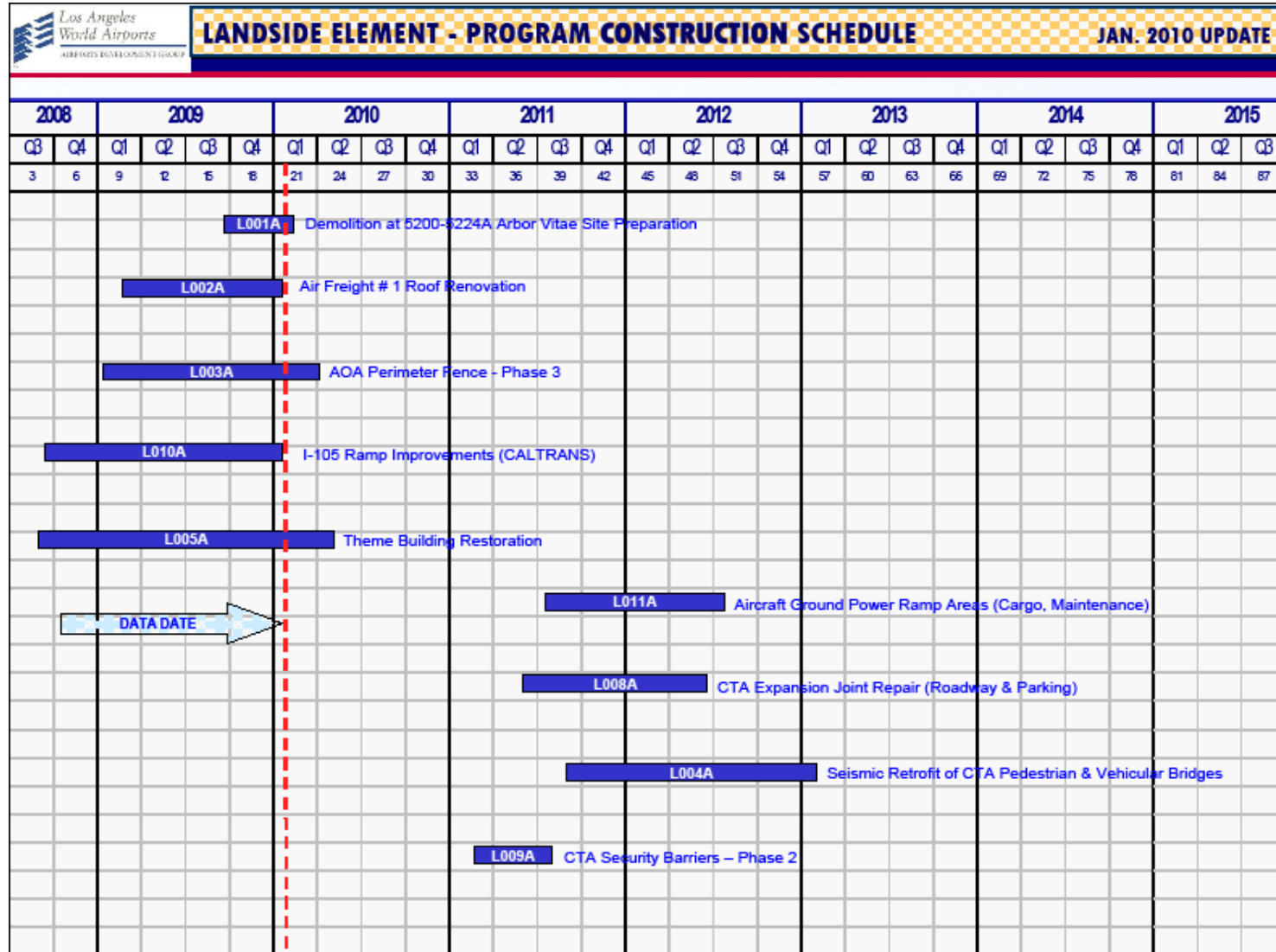


PROGRAM MASTER SCHEDULE - Continued

2008		2009				2010				2011				2012				2013				2014				2015		
Q3	Q4	Q1	Q2	Q3	Q4	Q1	Q2	Q3	Q4	Q1	Q2	Q3	Q4	Q1	Q2	Q3	Q4	Q1	Q2	Q3	Q4	Q1	Q2	Q3				
3	6	9	12	15	18	21	24	27	30	33	36	39	42	45	48	51	54	57	60	63	66	69	72	75	78	81	84	87

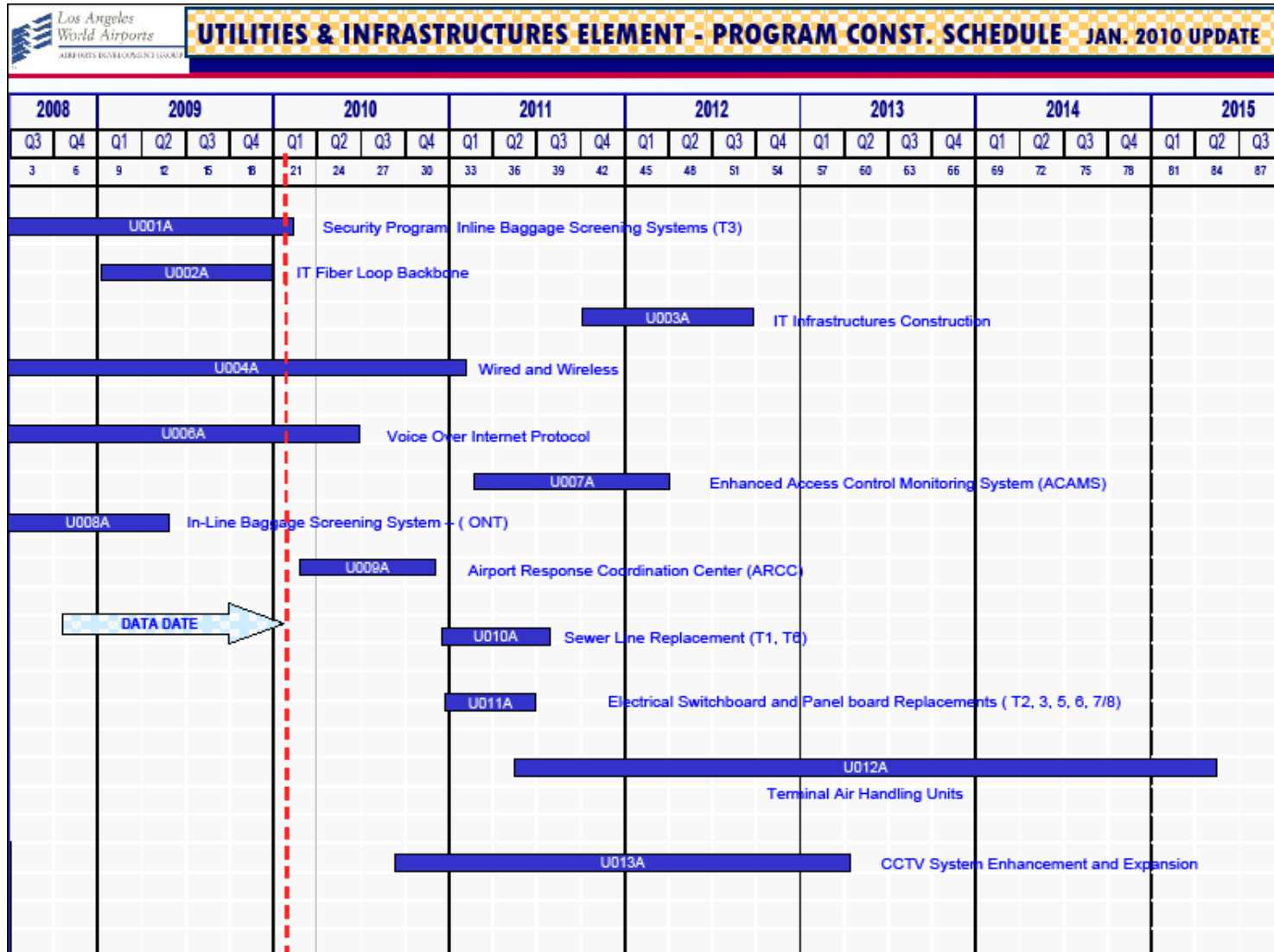


PROGRAM MASTER SCHEDULE - Continued





PROGRAM MASTER SCHEDULE - Continued



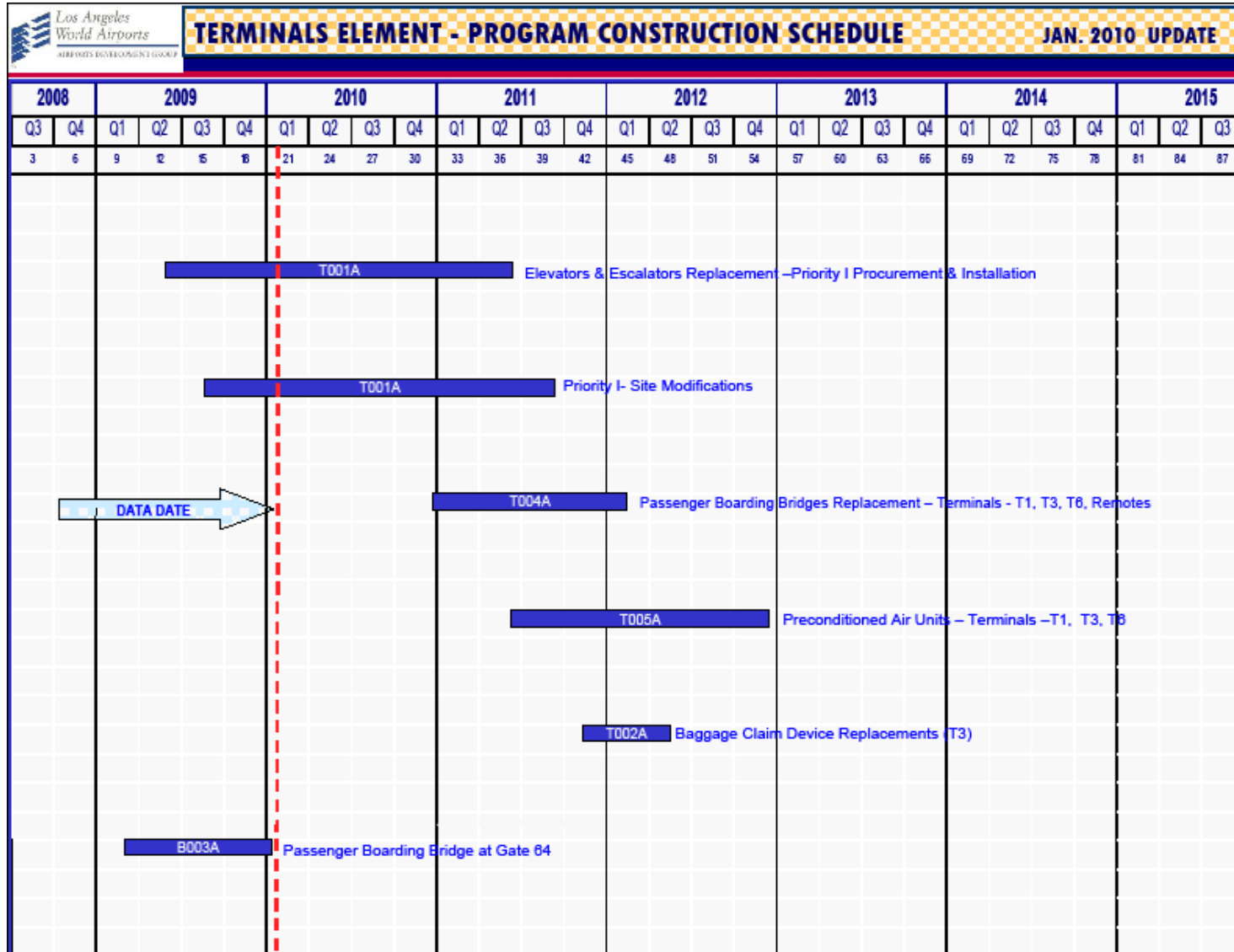


PROGRAM MASTER SCHEDULE - Continued

RESIDENTIAL/ SOUNDPROOFING ELEMENT- PROGRAM SCHEDULE JAN. 2010 UPDATE																												
2008		2009				2010				2011				2012				2013				2014				2015		
Q3	Q4	Q1	Q2	Q3	Q4	Q1	Q2	Q3	Q4	Q1	Q2	Q3	Q4	Q1	Q2	Q3	Q4	Q1	Q2	Q3	Q4	Q1	Q2	Q3	Q4	Q1	Q2	Q3
3	6	9	12	15	18	21	24	27	30	33	36	39	42	45	48	51	54	57	60	63	66	69	72	75	78	81	84	87
<div style="display: flex; justify-content: space-between; align-items: center;"> <div style="border: 1px solid blue; padding: 2px;">S004A</div> <div style="flex-grow: 1; border-bottom: 2px solid blue; position: relative;"> <div style="position: absolute; top: -10px; left: 50%; transform: translate(-50%, -100%);">Aircraft & Noise Monitoring Management System (ANMMS) - LAX</div> </div> </div>																												
<div style="display: flex; justify-content: space-between; align-items: center;"> <div style="border: 1px solid blue; padding: 2px;">S007A</div> <div style="flex-grow: 1; border-bottom: 2px solid blue; position: relative;"> <div style="position: absolute; top: -10px; left: 50%; transform: translate(-50%, -100%);">Aircraft & Noise Monitoring Management System (ANMMS)- ONT</div> </div> </div>																												
<div style="display: flex; justify-content: space-between; align-items: center;"> <div style="border: 1px solid blue; padding: 2px;">S005A</div> <div style="flex-grow: 1; border-bottom: 2px solid blue; position: relative;"> <div style="position: absolute; top: -10px; left: 50%; transform: translate(-50%, -100%);">Noise Mitigation – City of Ontario</div> </div> </div>																												
<div style="display: flex; justify-content: space-between; align-items: center;"> <div style="border: 1px solid blue; padding: 2px;">S001A</div> <div style="flex-grow: 1; border-bottom: 2px solid blue; position: relative;"> <div style="position: absolute; top: -10px; left: 50%; transform: translate(-50%, -100%);">Noise Mitigation/LAX School Soundproofing Agreements – Part 1</div> </div> </div>																												
<div style="display: flex; justify-content: space-between; align-items: center;"> <div style="border: 1px solid blue; padding: 2px;">S002A</div> <div style="flex-grow: 1; border-bottom: 2px solid blue; position: relative;"> <div style="position: absolute; top: -10px; left: 50%; transform: translate(-50%, -100%);">Noise Mitigation / Soundproofing (City of LA)</div> </div> </div>																												
<div style="display: flex; justify-content: space-between; align-items: center;"> <div style="border: 1px solid blue; padding: 2px;">S003A</div> <div style="flex-grow: 1; border-bottom: 2px solid blue; position: relative;"> <div style="position: absolute; top: -10px; left: 50%; transform: translate(-50%, -100%);">Noise Mitigation / Soundproofing (Other Jurisdictions)</div> </div> </div>																												
<div style="display: flex; justify-content: space-between; align-items: center;"> <div style="border: 1px solid blue; padding: 2px;">S008A</div> <div style="flex-grow: 1; border-bottom: 2px solid blue; position: relative;"> <div style="position: absolute; top: -10px; left: 50%; transform: translate(-50%, -100%);">Noise Mitigation / Voluntary Residential Acquisition & Relocation Program (Manchester SQ & Belford)</div> </div> </div>																												

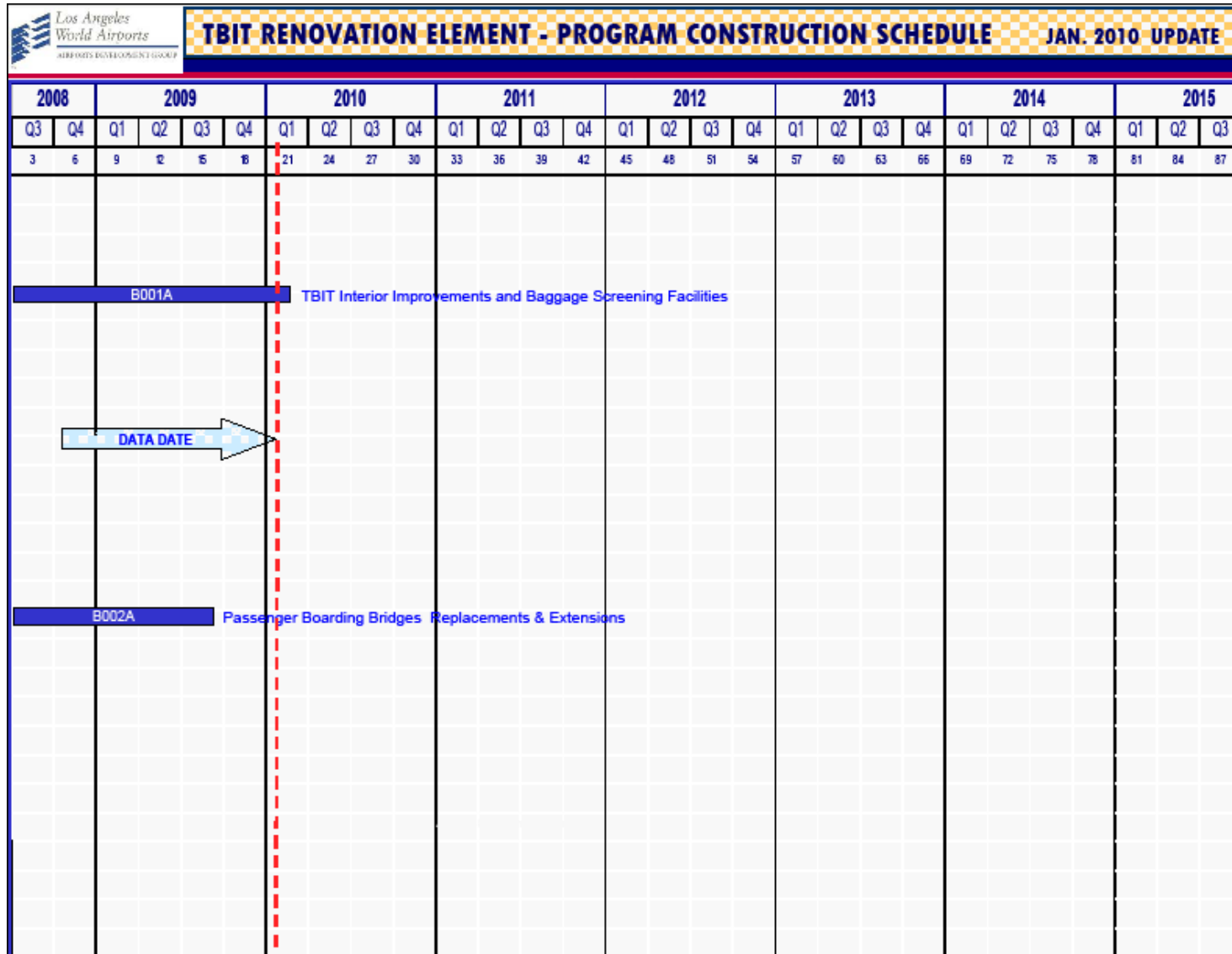


PROGRAM MASTER SCHEDULE - Continued





PROGRAM MASTER SCHEDULE - Continued



User's Guide - Budget Reports

The information provided herein is designed to furnish users of the Airport Development Group (ADG) Budget Reports with greater knowledge and a better understanding of the composition of the various components of the budget report.

Current Budget - Is the estimated cost of the project as it was planned plus or minus any processed revisions.

Committed to Date - Is the total contractual obligation to date for the project, e.g. awarded design contracts, awarded construction contracts, authorized task orders, etc.

Incurred to Date - Is the total of invoices received to date for the project.

Estimate at Completion (EAC) - Is the latest estimate of the total cost of the project.

Variance - Is the difference between Budget minus Estimate at Completion (EAC).

PROGRAM COST SUMMARY REPORT

as of 12/31/2009

(dollars in thousands)					
Description	Current Budget	Committed to Date	Incurred to Date	Estimate at Completion	Variance (Budget-EAC)
Airside Element	1,279,836	680,855	468,024	1,221,076	58,761
Bradley West Element	1,545,020	317,493	73,140	1,379,924	165,096
CUP Replacement Element	444,185	22,086	17,517	419,444	24,740
Utilities & Infrastructure Element	449,314	251,150	213,029	430,359	18,955
Landside Element	122,868	34,463	21,235	115,773	7,095
Residential/Soundproofing Element	1,279,643	636,558	636,127	1,279,643	0
Terminal Element	304,556	50,223	14,230	272,263	32,293
TBIT Renovation Element	755,343	736,502	693,547	736,502	18,841
Unallocated Contingency	297,546	0	0	0	297,546
Program Total	6,478,311	2,729,330	2,136,849	5,854,984	623,327

Notes:

1. The current budget and estimate at completion excludes escalation

AIRSIDE ELEMENT BUDGET REPORT as of 12/31/2009

(dollars in thousands)

Project #	Description	Current Budget	Committed to Date	Incurred to Date	Estimate at Completion	Variance (Budget-EAC)
M209A	Construction Support Facilities	14,790	6,766	2,956	12,950	1,840
M000A	Associated Projects	1,340	1,304	1,263	1,307	33
M101A	Crossfield Taxiway Project	137,780	122,605	57,345	137,780	0
M107A	LAX Aircraft Rescue and Fire Fighting Facility	14,190	11,440	3,341	12,736	1,454
M205A	Bradley West - Aprons	111,870	14,089	6,048	102,925	8,945
M204A	Taxilane 'S'	150,918	124,054	10,767	144,068	6,850
M207A	Taxilane 'T' Associated Work	44,210	1,111	570	40,265	3,945
M306A	Taxilane 'T'	52,290	3,712	2,003	49,028	3,262
M210A	Demolition of Existing Concourses	52,600	1,322	678	47,924	4,676
G001A	West Area Maintenance Pad & Infrastructure	169,090	7,829	3,930	157,715	11,375
M309A	American Airlines Settlement	27,250	22,059	21,977	25,743	1,507
A001A	Southside Airfield Improvement Program - Airfield Intersection Improvements - Phase 2	41,049	39,052	32,806	39,640	1,409
A004A	Southside Airfield Improvement Program - Runway 25L & Center Taxiway	313,628	312,177	312,176	312,192	1,436
A005A	Propeller Aircraft Aviation Center - Site Preparation (VNY)	7,042	5,173	5,173	5,175	1,867
A003A	GSE Quick Charging Stations Implementation (Pilot Program)	7,005	0	0	6,490	515
A008A	Runway Safety Area Improvements - (Planning)	303	0	0	303	0
A006A	Airfield Safety Improvements	125,000	0	0	115,888	9,113
A009A	Runway Status Light System	7,721	6,810	6,037	7,447	274
A007A	Security Airfield Access Posts Upgrade	1,760	1,352	954	1,500	260
	Airside Element Total	1,279,836	680,855	468,024	1,221,076	58,761

Notes:

1. The current budget and estimate at completion excludes escalation

BRADLEY WEST ELEMENT BUDGET REPORT as of 12/31/2009

(dollars in thousands)

Project #	Description	Current Budget	Committed to Date	Incurred to Date	Estimate at Completion	Variance (Budget-EAC)
M201A	Bradley West Gates	742,954	256,002	45,623	663,482	79,472
M203A	Bradley West Core Improvements	793,164	55,975	27,517	707,812	85,352
M203B	Traffic Mitigations	3,542	156	0	3,270	272
M308A	Art In Public Places	5,360	5,360	0	5,360	0
	Bradley West Element Total	1,545,020	317,493	73,140	1,379,924	165,096

Notes:

1. The current budget and estimate at completion excludes escalation

CUP REPLACEMENT ELEMENT BUDGET REPORT as of 12/31/2009

(dollars in thousands)

Project #	Description	Current Budget	Committed to Date	Incurred to Date	Estimate at Completion	Variance (Budget-EAC)
C001A	Central Utility Plant	438,085	22,086	17,517	409,836	28,248
C004A	CTA - Utility Distribution - Phase 2, 3, 4	6,100	0	0	9,608	(3,508)
	CUP Replacement Element Total	444,185	22,086	17,517	419,444	24,740

Notes:

1. The current budget and estimate at completion excludes escalation

UTILITIES & INFRASTRUCTURE ELEMENT BUDGET REPORT as of 12/31/2009

(dollars in thousands)						
Project #	Description	Current Budget	Committed to Date	Incurred to Date	Estimate at Completion	Variance (Budget-EAC)
U001A	Security Program In-Line Baggage Screening Systems (T3) North	160,100	152,685	124,056	152,685	7,415
U002A	IT Fiber Loop Backbone	2,200	1,806	1,405	1,806	394
U003A	IT Infrastructure Construction	27,579	6,961	5,766	22,000	5,579
U004A	Wired & Wireless	15,808	12,482	8,475	15,808	0
U006A	Voice Over Internet Protocol	3,521	2,888	1,418	3,521	0
U007A	Enhanced Access Control Monitoring System (ACAMS)	14,519	2,212	1,112	13,500	1,019
U008A	Security Program - In-Line Baggage Screening System (ONT)	73,000	69,510	69,410	69,510	3,490
U009A	Airport Response Coordination Center (ARCC)	14,250	398	279	14,250	0
U010A	Sewer Line Replacement (T1,T6)	3,092	0	0	3,092	0
U011A	Electrical Switchboard & Panelboard Replacements (T2, 3, 5, 6, 7,8)	54,099	0	0	54,099	0
U012A	Terminal Air Handling Units (AHU) Upgrades	62,588	0	0	62,588	0
U013A	CCTV System Enhancement and Expansion	18,558	2,208	1,108	17,500	1,058
	Utilities & Infrastructure Element Total	449,314	251,150	213,029	430,359	18,955

Notes:

1. The current budget and estimate at completion excludes escalation

LANDSIDE ELEMENT BUDGET REPORT as of 12/31/2009

(dollars in thousands)

Project #	Description	Current Budget	Committed to Date	Incurred to Date	Estimate at Completion	Variance (Budget-EAC)
L001A	Demolition of Facility SW Corner of Arbor Vitae and La Cienega	550	292	0	444	106
L002A	Air Freight 1 - Roof Renovation	2,200	1,852	1,156	2,027	173
L003A	AOA Perimeter Fence (World Way West) Phase 3	17,162	16,083	5,847	16,650	512
L010A	I-105 Ramp Improvements (Caltrans)	2,000	1,621	0	2,000	0
L005A	Theme Building Restoration	11,523	11,523	11,458	11,523	0
L007A	ConRAC Planning & Definition	3,092	3,092	2,774	3,092	0
L011A	Aircraft Ground Power Ramp Areas (Cargo, Maintenance)	50,623	0	0	46,929	3,694
L008A	CTA Expansion Joint Repair (Roadway and Parking)	13,426	0	0	12,445	981
L004A	Seismic Retrofit of CTA Pedestrian and Vehicular Bridges	20,292	0	0	18,809	1,483
L009A	CTA Security Barriers - Phase 2	2,000	0	0	1,854	146
	Landside Element Total	122,868	34,463	21,235	115,773	7,095

Notes:

1. The current budget and estimate at completion excludes escalation

RESIDENTIAL/SOUNDPROOFING ELEMENT BUDGET REPORT as of 12/31/2009

(dollars in thousands)						
Project #	Description	Current Budget	Committed to Date	Incurred to Date	Estimate at Completion	Variance (Budget-EAC)
S004A	Aircraft & Noise Monitoring & Management System (ANMMS)-LAX	3,233	3,233	2,802	3,233	0
S007A	Aircraft & Noise Monitoring & Management System (ANMMS)-ONT	636	613	613	636	0
S005A	Noise Mitigation - City of Ontario	84,774	34,639	34,639	84,774	0
S001A	Noise Mitigation/LAX School Soundproofing Agreements - Part 1	240,000	0	0	240,000	0
S002A	Noise Mitigation/Soundproofing (City of LA)	160,000	134,394	134,394	160,000	0
S003A	Noise Mitigation/Soundproofing (Other Jurisdictions)	236,000	116,786	116,786	236,000	0
S006A	Noise Mitigation / Voluntary Residential Acquisition & Relocation Program (Manchester SQ & Belford)	555,000	346,893	346,893	555,000	0
Residential/Soundproofing Element Tota		1,279,643	636,558	636,127	1,279,643	0

Notes:

1. The current budget and estimate at completion excludes escalation

TERMINAL ELEMENT BUDGET REPORT as of 12/31/2009

(dollars in thousands)

Project #	Description	Current Budget	Committed to Date	Incurred to Date	Estimate at Completion	Variance (Budget-EAC)
T001A	Elevators and Escalators Replacement	270,000	49,348	13,605	240,170	29,830
T004A	Passenger Boarding Bridges Replacement (T1, T3, T6, Remotes)	12,992	0	0	12,049	943
T005A	Preconditioned Air Unit Installation (T1, T3, T6)	9,374	0	0	8,694	680
T002A	Baggage Claim Devices Replacement (T3)	11,040	0	0	10,287	753
T003A	Passenger Boarding Bridge at Gate 64	1,150	875	625	1,063	87
	Terminal Element Total	304,556	50,223	14,230	272,263	32,293

Notes:

1. The current budget and estimate at completion excludes escalation

TBIT RENOVATION ELEMENT BUDGET REPORT as of 12/31/2009

(dollars in thousands)

Project #	Description	Current Budget	Committed to Date	Incurred to Date	Estimate at Completion	Variance (Budget-EAC)
B001A	TBIT Interior Improvements and Baggage Screening Facilities	750,174	732,058	689,451	732,058	18,116
B002A	Passenger Boarding Bridges (PBB) Replacements & Extensions	5,169	4,444	4,096	4,444	725
	TBIT Renovation Element Total	755,343	736,502	693,547	736,502	18,841

Notes:

1. The current budget and estimate at completion excludes escalation

User's Guide - Cash Flow

The information provided herein is designed to furnish users of the Airport Development Group (ADG) Cash Flow Reports with greater knowledge and a better understanding of the composition of the various components of the budget report.

Current Budget - Is the estimated cost of the project as it was planned plus or minus any processed revisions.

Prior Expended - Represents the sum of all payments made through the end of the previous fiscal year.

FY2010 - Is the forecast expenditure for the Fiscal Year 2010 (1-Jul-09 thru 30-Jun-09).

FY2010 Actual - Represents the sum of all payments made during the Fiscal Year 2010.

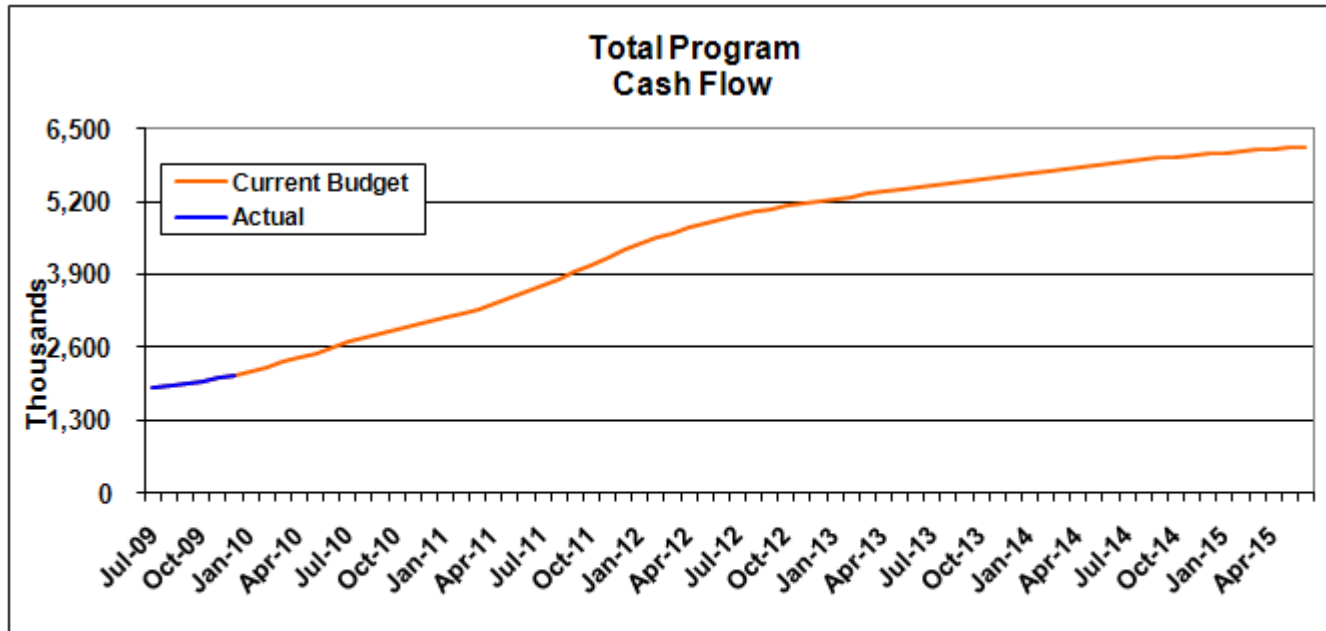
FY2011, FY2012, and FY2013 - Is the forecast expenditure for the Fiscal Years 2011, 2012, and 2013, respectively.

Remaining Years - Represents any expenditure currently forecast beyond FY2013.



PROGRAM CASH FLOW

as of 12/31/2009



Total Program	Prior Expended (thru 30Jun09)	FY2010	FY2011	FY2012	FY2013	Remaining Years	Total
Current Budget	\$1,849,802	\$762,262	\$973,831	\$1,307,353	\$558,338	\$729,179	\$6,180,765
Actual	\$1,849,802	\$242,864	\$0	\$0	\$0	\$0	\$2,092,666

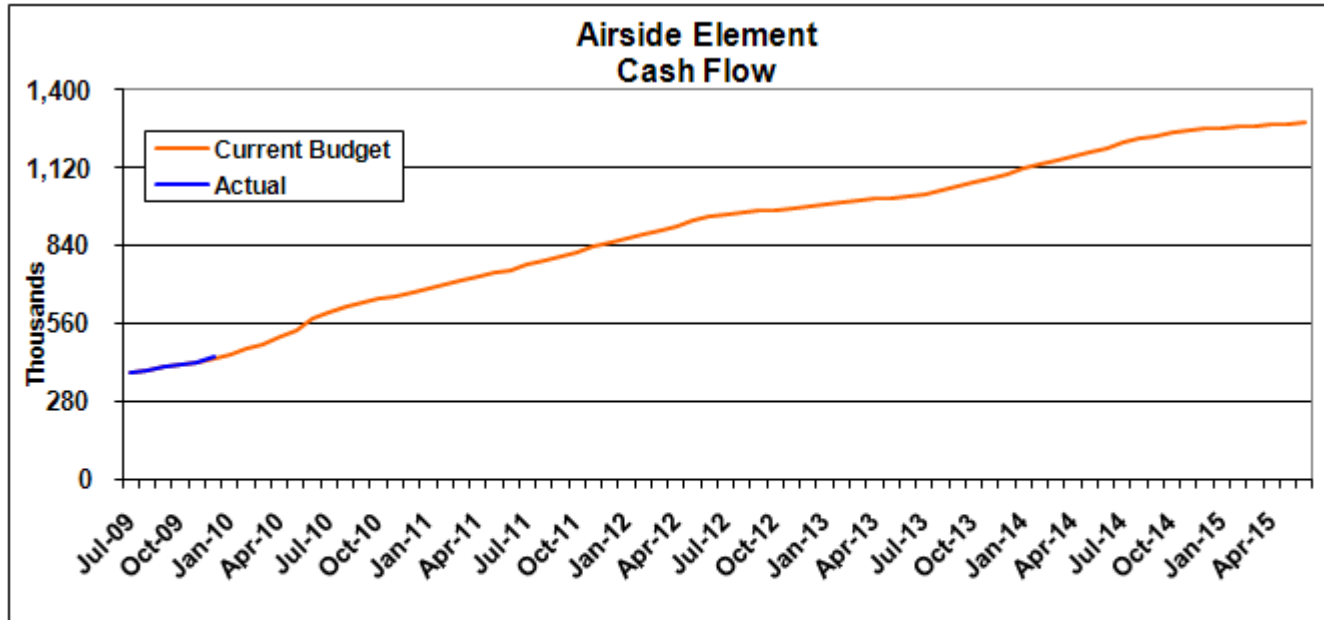
Notes:

1. Unallocated Contingency is not included.
2. Escalation is not included.



AIRSIDE ELEMENT CASH FLOW

as of 12/31/2009



Airside Element	Prior Expended (thru 30Jun09)	FY2010	FY2011	FY2012	FY2013	Remaining Years	Total
Current Budget	\$376,197	\$203,039	\$173,661	\$188,856	\$74,535	\$263,548	\$1,279,836
Actual	\$376,197	\$65,052	\$0	\$0	\$0	\$0	\$441,249

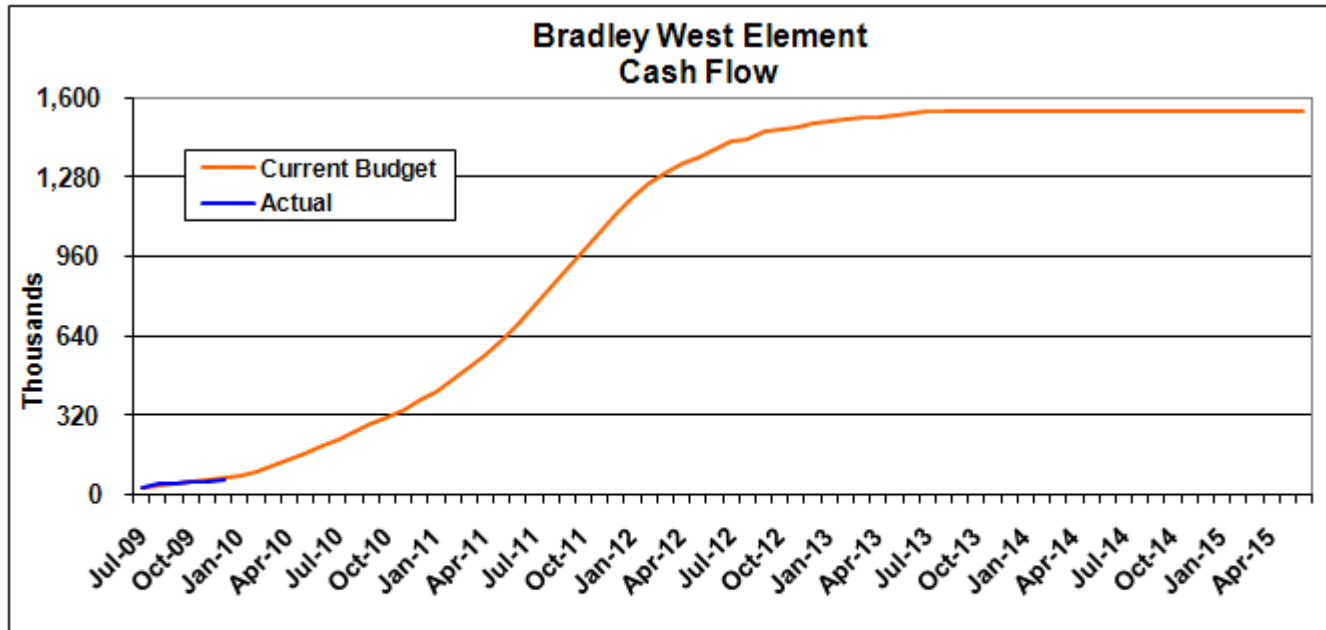
Notes:

1. Unallocated Contingency is not included.
2. Escalation is not included.



BRADLEY WEST ELEMENT CASH FLOW

as of 12/31/2009



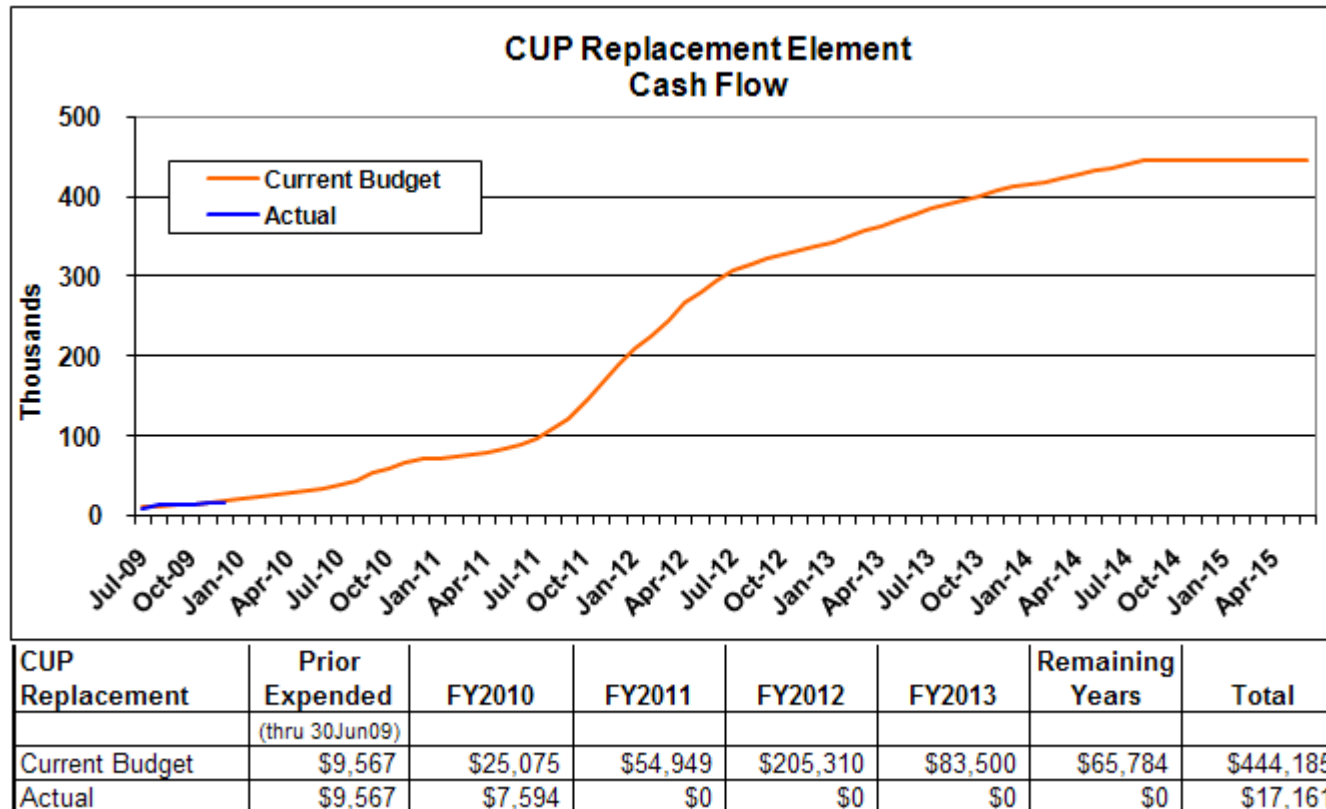
Bradley West Element	Prior Expended (thru 30Jun09)	FY2010	FY2011	FY2012	FY2013	Remaining Years	Total
Current Budget	\$25,670	\$171,132	\$492,950	\$705,538	\$139,480	\$10,250	\$1,545,020
Actual	\$25,670	\$31,671	\$0	\$0	\$0	\$0	\$57,341

Notes:

1. Unallocated Contingency is not included.
2. Escalation is not included.

CUP REPLACEMENT CASH FLOW

as of 12/31/2009



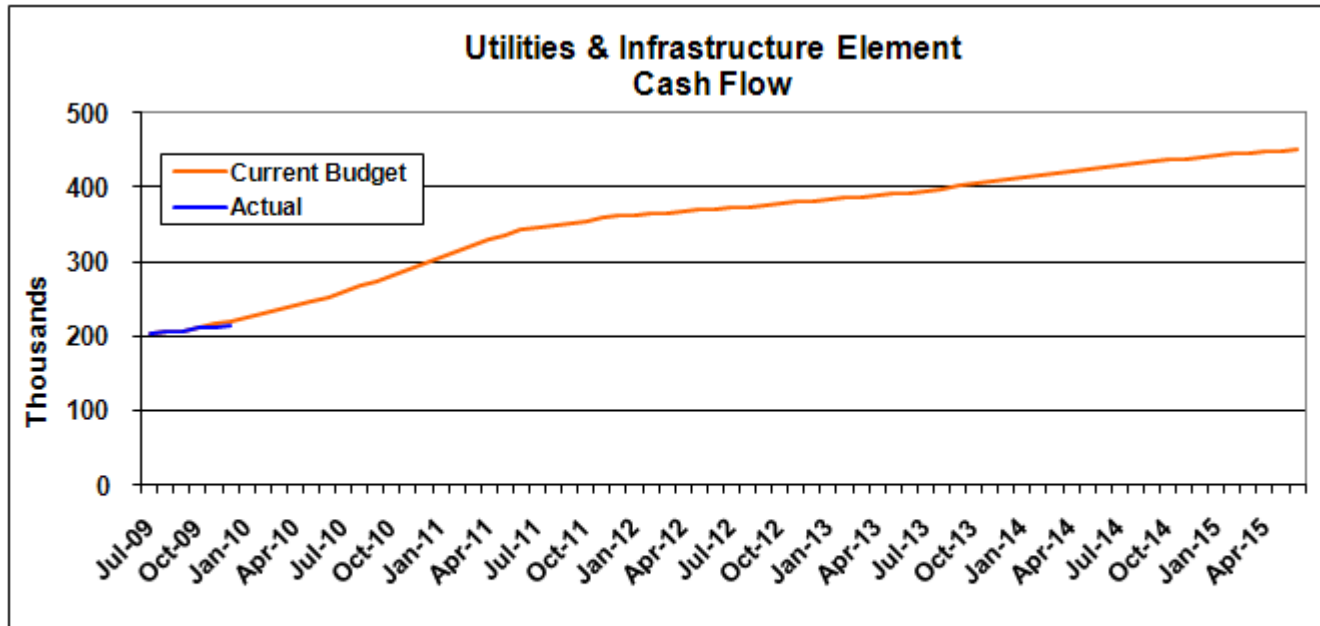
Notes:

1. Unallocated Contingency is not included.
2. Escalation is not included.



UTILITIES & INFRASTRUCTURE ELEMENT CASH FLOW

as of 12/31/2009



Utilities & Infrastructure	Prior Expended (thru 30Jun09)	FY2010	FY2011	FY2012	FY2013	Remaining Years	Total
Current Budget	\$199,220	\$52,030	\$92,956	\$26,116	\$22,054	\$56,938	\$449,314
Actual	\$199,220	\$13,733	\$0	\$0	\$0	\$0	\$212,953

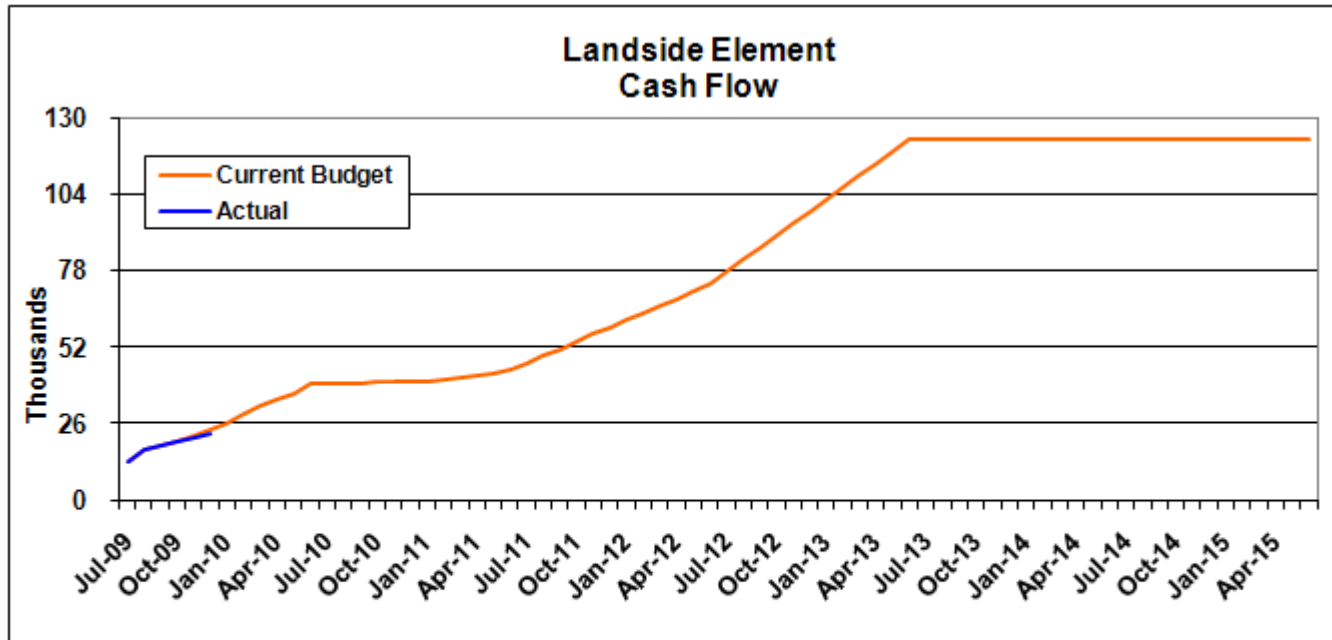
Notes:

1. Unallocated Contingency is not included.
2. Escalation is not included.



LANDSIDE ELEMENT CASH FLOW

as of 12/31/2009



Landside Element	Prior Expended (thru 30Jun09)	FY2010	FY2011	FY2012	FY2013	Remaining Years	Total
Current Budget	\$11,489	\$27,741	\$4,927	\$29,132	\$49,579	\$0	\$122,868
Actual	\$11,489	\$11,300	\$0	\$0	\$0	\$0	\$22,789

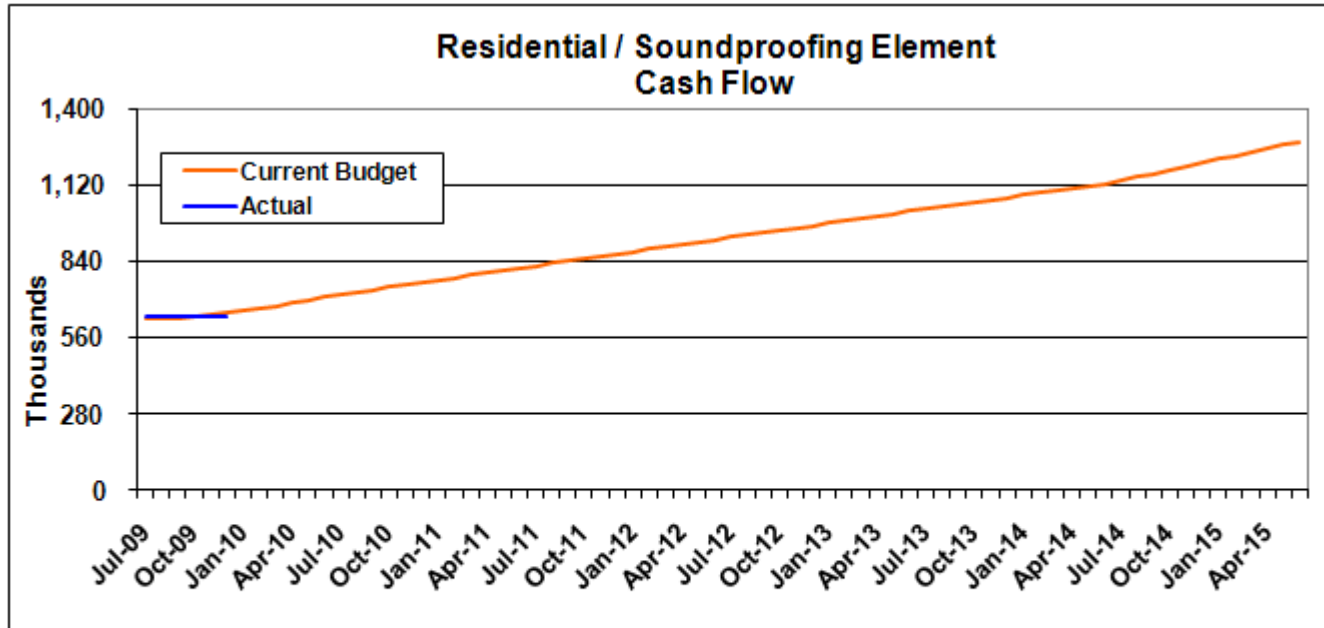
Notes:

1. Unallocated Contingency is not included.
2. Escalation is not included.



RESIDENTIAL/SOUNDPROOFING ELEMENT CASH FLOW

as of 12/31/2009



Residential / Soundproofing	Prior Expended	FY2010	FY2011	FY2012	FY2013	Remaining Years	Total
	(thru 30Jun09)						
Current Budget	\$624,774	\$83,147	\$107,647	\$103,593	\$104,973	\$255,509	\$1,279,643
Actual	\$624,774	\$11,354	\$0	\$0	\$0	\$0	\$636,128

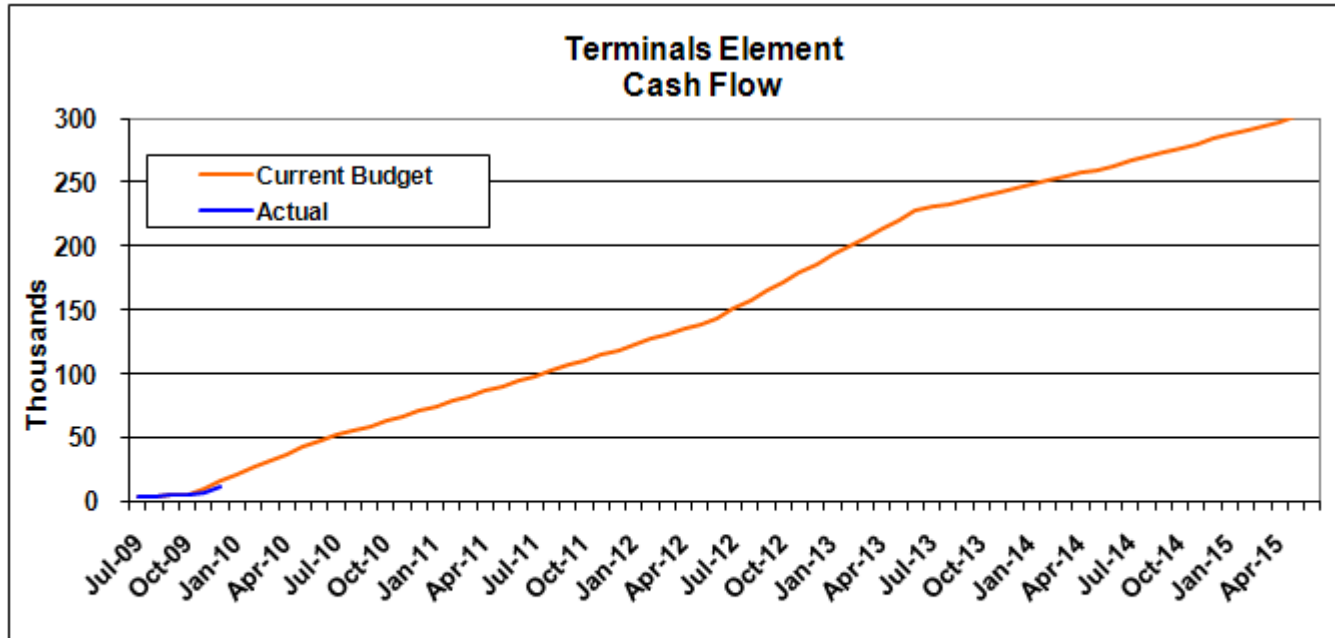
Notes:

1. Unallocated Contingency is not included.
2. Escalation is not included.



TERMINALS ELEMENT CASH FLOW

as of 12/31/2009



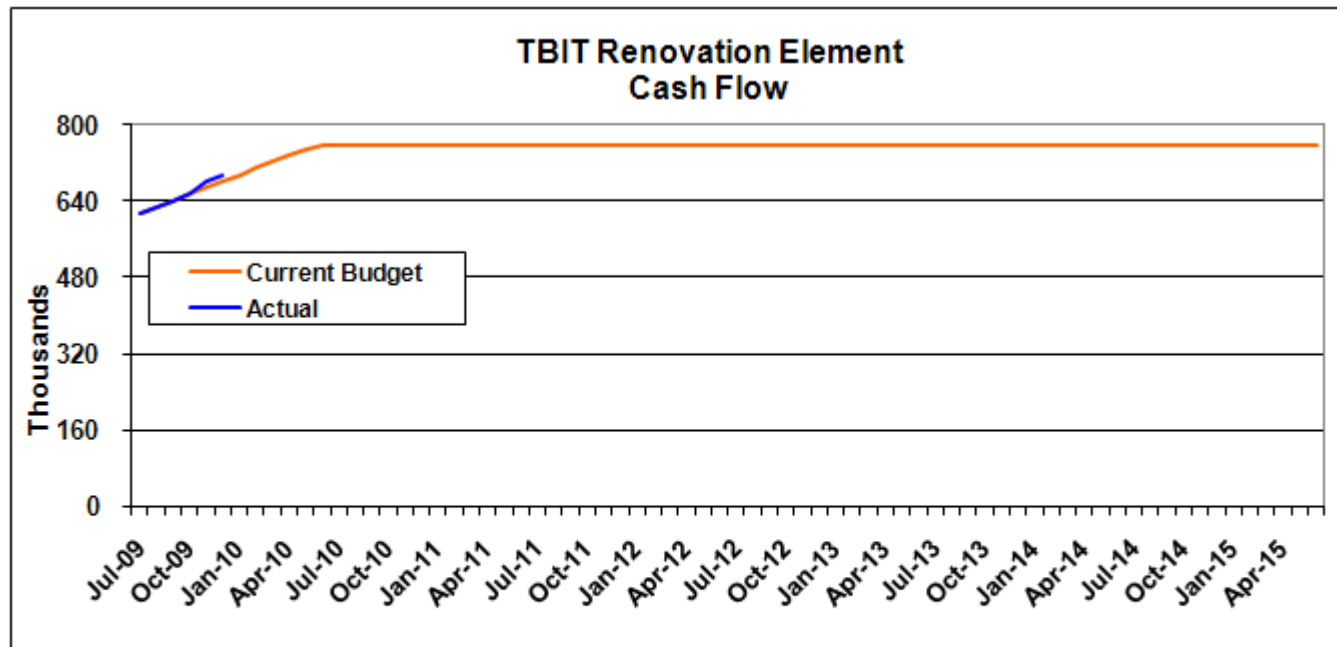
Terminals Element	Prior Expended (thru 30Jun09)	FY2010	FY2011	FY2012	FY2013	Remaining Years	Total
Current Budget	\$3,234	\$44,406	\$46,741	\$48,808	\$84,217	\$77,150	\$304,556
Actual	\$3,234	\$8,894	\$0	\$0	\$0	\$0	\$12,128

Notes:

1. Unallocated Contingency is not included.
2. Escalation is not included.

TBIT RENOVATION ELEMENT CASH FLOW

as of 12/31/2009



TBIT Renovation Element	Prior Expended (thru 30Jun09)	FY2010	FY2011	FY2012	FY2013	Remaining Years	Total
Current Budget	\$599,651	\$155,692	\$0	\$0	\$0	\$0	\$755,343
Actual	\$599,651	\$93,266	\$0	\$0	\$0	\$0	\$692,918

Notes:

1. Unallocated Contingency is not included.
2. Escalation is not included.

CHANGE ORDERS

as of 12/31/2009

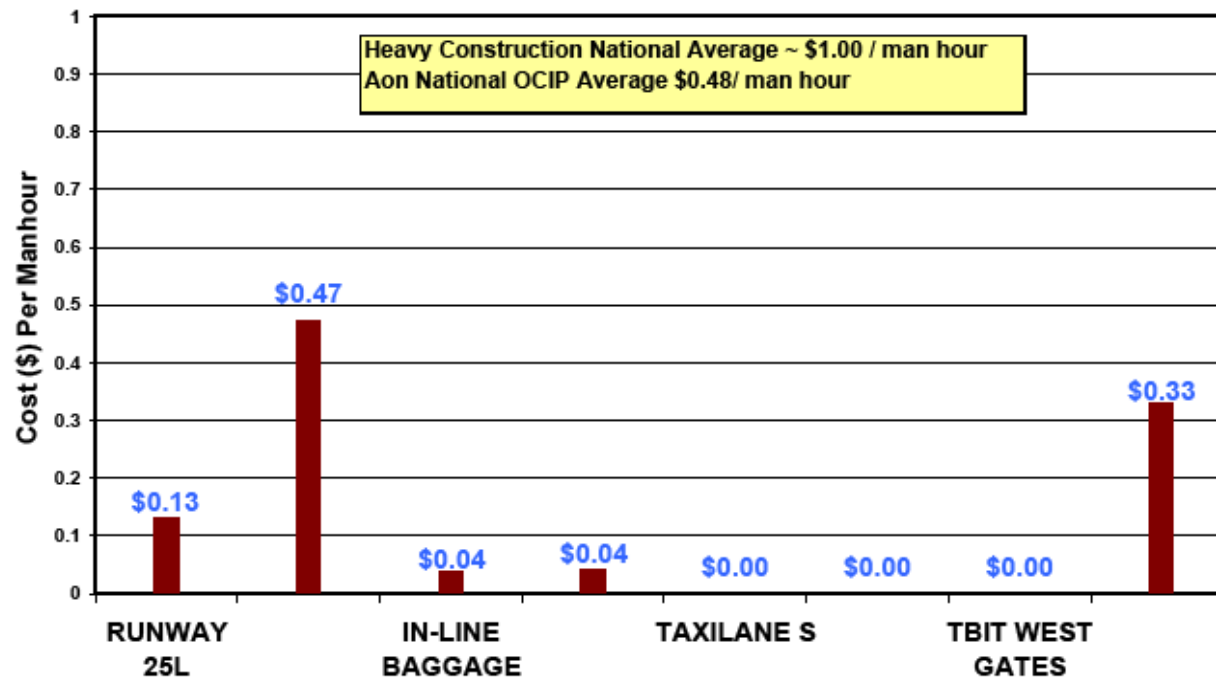
Element	Project	Contract No	Change Order No.	\$0- \$ 150K	\$150K - \$ 1Mil	> \$1 Mil	Remarks
AIRSIDE ELEMENT	Crossfield Taxiway Project	DA-4331	0009			\$3,910,000	Schedule Acceleration
BRADLEY WEST ELEMENT							
CUP ELEMENT							
UTILITIES & INFRASTRUCTURE ELEMENT							
RESIDENTIAL / SOUNDPROOFING ELEMENT							
LANDSIDE ELEMENT							
TERMINAL ELEMENT							
TBIT RENOVATION ELEMENT	TBIT Interior Improvements & Baggage Screening Facilities	DA-4141	335	\$33,073			Carbon Monoxide Control for Exhaust; Exterior Electrical Conduit; New Ceiling Utility Re-Supporting; ACAM Card Reader
	TBIT Interior Improvements & Baggage Screening Facilities	DA-4141	336	\$42,130			Credit Back for RFI 941.1; North Matrix Corrections; Site Conditions, Meeters & Greeters; Via Cities Software Modifications
	TBIT Interior Improvements & Baggage Screening Facilities	DA-4141	337	\$41,925			Duct Conflict with Ceiling; Relocate L3 Disconnect Switch; Fire Alarm Device Install at OS-2; Fire Watch for Atrium Area
	TBIT Interior Improvements & Baggage Screening Facilities	DA-4141	338	\$31,209			Installation of Additional Exit Sign; Repair to Existing Conduits; Blu Ray Players; Conduit Junction Boxes Conflict; Elevator Floor Indicator Locations
	TBIT Interior Improvements & Baggage Screening Facilities	DA-4141	339	\$13,250			Low Roof Hatch; TRIB Revised Equipment Layout; Credit B54 Data Line Feeds; Four Line Rail System
	TBIT Interior Improvements & Baggage Screening Facilities	DA-4141	340	\$14,490			Temporary Relocations; ACAM Power Supply; Crossover Door Conflict; Door 3409C Hardware
	TBIT Interior Improvements & Baggage Screening Facilities	DA-4141	341	\$16,304			TC1-04 Conflict with 6" DCW; Precast Column Cover; BC-7 FMS HVAC Controller Power; Light Fixture Needed in RM 3105A
	TBIT Interior Improvements & Baggage Screening Facilities	DA-4141	342	\$40,461			Relocate L3 Machine; Remeasuring Laying Out Roof; Existing Conveyors; Mullion Metal Flashing; Defibrillator Relocation
	TBIT Interior Improvements & Baggage Screening Facilities	DA-4141	343	\$26,338			Room 4117 Finishes; Telecom Room Signage; TSA Fiber Re-route; ACAMS Exposed Conduit on Mullions
	TBIT Interior Improvements & Baggage Screening Facilities	DA-4141	344	\$23,007			Credit for Deleted Stair; Ext Grade Conflict at Planter Walls; New Wall and Doors at Lobby 1301

CHANGE ORDERS - Continued

as of 12/31/2009

Element	Project	Contract No	Change Order No.	\$0 - \$ 150K	\$150K - \$ 1Mil	> \$1 Mil	Remarks
TBIT RENOVATION ELEMENT	TBIT Interior Improvements & Baggage Screening Facilities	DA-4141	345	(\$7,962)			Desclope Digital Wall Covers; Replace Circuits from Supply Fan; Information Booths Desk Top
	TBIT Interior Improvements & Baggage Screening Facilities	DA-4141	346	\$57,260			Halo Fixture Support Conflicts; Gaps Between Soffits; Column Cover at 61/P Conflicts
	TBIT Interior Improvements & Baggage Screening Facilities	DA-4141	347	\$37,995			Exit Sign Fixture Requirements; Conflict with Phenolic Wall Panels; TR4B - TR4C Fan Coil Units; Fire Watch for Atrium Area
	TBIT Interior Improvements & Baggage Screening Facilities	DA-4141	348	\$25,908			Provide Cleanout in 4" Waste Line; Light Pole Base Detail; B54 Signage Data Run Conflict; Continuity Plate Missing
	TBIT Interior Improvements & Baggage Screening Facilities	DA-4141	349	\$7,332			Existing Dry Standpipe Conflict; Illuminated Sign B01; Concourse Door Issues; 10" Crash Guard Bollards; HVAC Chase FA Devices
	TBIT Interior Improvements & Baggage Screening Facilities	DA-4141	350	\$25,077			CCTV Cameras
	TBIT Interior Improvements & Baggage Screening Facilities	DA-4141	351	\$35,233			Opening Wall Conflict, Framing at Wall Post, Existing Lobby Ceiling Elevations, Column Cover Conflict, Fireproofing Cost for Bulletin 90
	TBIT Interior Improvements & Baggage Screening Facilities	DA-4141	352	\$58,845			Irrigation System, Relocate Utilities at Transit Lounge, DFS Missing and Additional VAV Box, CMU Wall Openings
	TBIT Interior Improvements & Baggage Screening Facilities	DA-4141	353	\$22,003			Survey of South Ramp, Conduit Rack Conflict, Fan Room Louver Supports Credit, Existing Copper Pipe, Replacement of Shaftwall, Security Hardware Mounting
	TBIT Interior Improvements & Baggage Screening Facilities	DA-4141	354	\$24,864			4" Conduit and OS-1, Electrical Panel Correction Notice, Rain Event Labor, Existing Fuel Oil Tank Anti-Siphon, Workstation and KYM Connections
	TBIT Interior Improvements & Baggage Screening Facilities	DA-4141	355	\$37,948			BHS Expansion Joint, Utilities and Junction Boxes, Floor Demo Obstructions, FDSD Power Provisions, SMB Gap at Tug Bridge, Structural Support of Precast, Stair Nosing Desclope at Arrivals

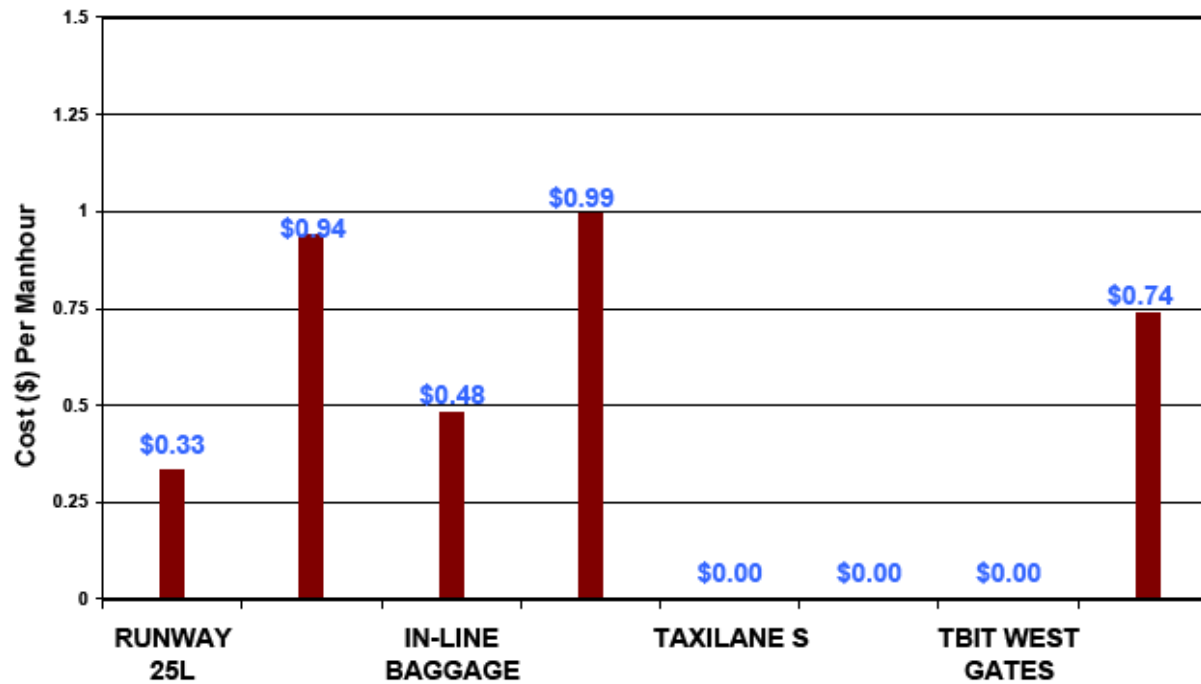
LAWA OCIP Workers Compensation Loss Performance
- as of December 31, 2009 -





OCIP - Continued
as of 12/31/2009

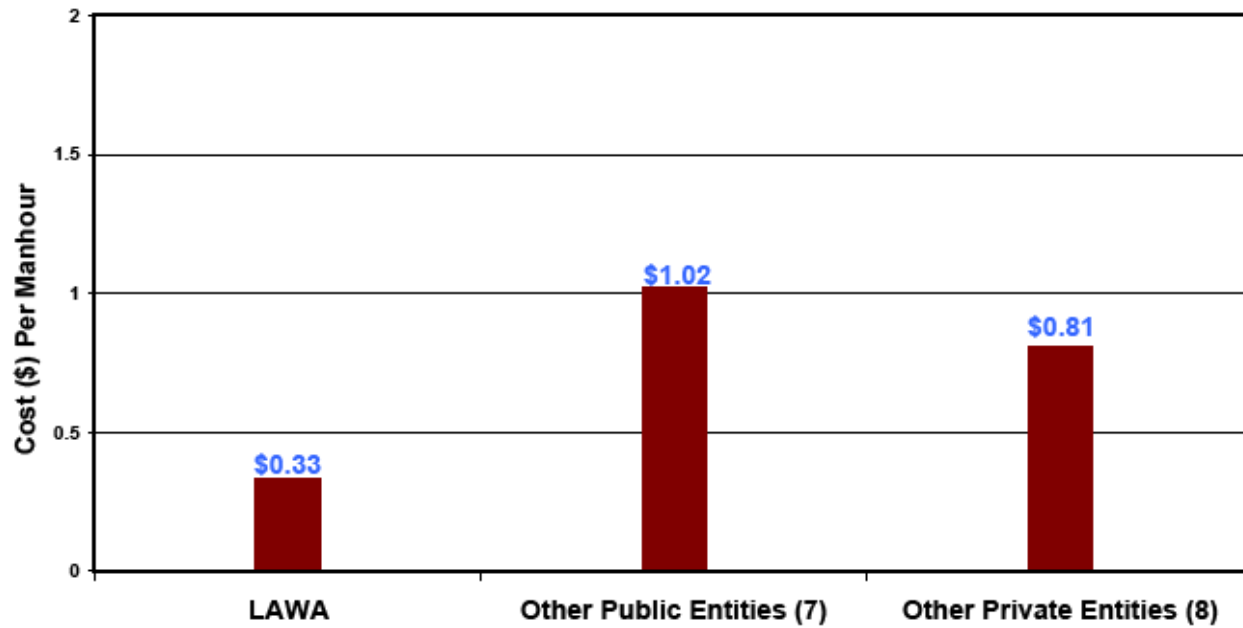
LAWA OCIP General Liability Loss Performance
- as of December 31, 2009 -





OCIP - Continued
as of 12/31/2009

Current Large OCIP Projects
Comparison of Workers Comp Costs Per Manhour



**MWBE/DBE
Subcontractor Utilization Summary Report
as of 12/31/2009**

Firm	Contract No.	DBE or M/WBE Contract	Proposed Level of Participation	Achieved Participation to Date*		Remarks
				M/WBE	DBE	
Camp Dresser & McKee	DA-4201A	M/WBE	20.00 %	29.26 %	3.85 %	
DMJM Aviation, Inc.	DA-4260	DBE	12.00 %	N/A %	16.16 %	
Fentress Architects	DA-4274	DBE	9.30 %	13.62 %	6.86 %	
Flatiron West, Inc.	DA-4398	DBE	1.00 %	N/A %	N/A %	Awaiting first invoice.
Griffith Company	DA-4338	M/WBE	6.60 %	N/A %	N/A %	Awaiting Contractor Submittal
Hatch Mott MacDonald, LLC	DA-4275	DBE	11.63 %	15.58 %	5.48 %	
Hellmuth, Obata + Kassabaum, Inc.	DA-4313	M/WBE	25.00 %	42.63 %	N/A %	
Paragon Project Resources, Inc.	DA-4332	M/WBE	16.00 %	5.46 %	N/A %	
Paslay Management Group	DA-4324	M/WBE	10.00 %	9.33 %	N/A %	
R & L Brosamer	DA-4331	DBE	15.40 %	8.48 %	0.85 %	
Tobo Construction	DA-4354	DBE	0.00 %	10.10 %	0.00 %	
W.E. O'Neil	DA-4371	M/WBE	6.80 %	11.70 %	N/A %	
Walsh Austin Joint Venture - Pre-Construction	DA-4337 Gates	M/WBE	20.00 %	13.59 %	17.68 %	
Walsh Austin Joint Venture - Construction	DA-4337 Gates	M/WBE	14.00 %	N/A %	N/A %	Awaiting first invoice.
Walsh Austin Joint Venture - Pre-Construction	DA-4382 Core	M/WBE	20.00 %	N/A %	N/A %	Awaiting first invoice.
Total Participation:	N/A	N/A	N/A	12.05%	7.11%	
Total Combined Participation:	N/A	N/A	N/A	19.16%		

*Achieved Participation to Date includes progress in the pledged program and progress outside of the pledge.